

MIPS INSTRUMENT APPROACH CHART

AD ELEV 141

VORTAC to ILS / DME RWY 10L SKRYDSTRUP (EKSP)

COPENHAGEN CONTROL 261.050 133.150		SKRYDSTRUP ATIS 133.900	SKRYDSTRUP APPROACH 300.075 127.475		SKRYDSTRUP TOWER 259.875 128.325	
VORTAC SKR 110.40/CH 41x	Localizer-DME ISPA 109.35/CH 30y	APP COURSE 104°	FAP/FAF ALT 2000 FT	GS 3.00°	DA 327	TDZE 127
ALS length 900 M		LDA 9863 FT				

NOTE:

MAX SPEED
IAF to MAP
250 KIAS

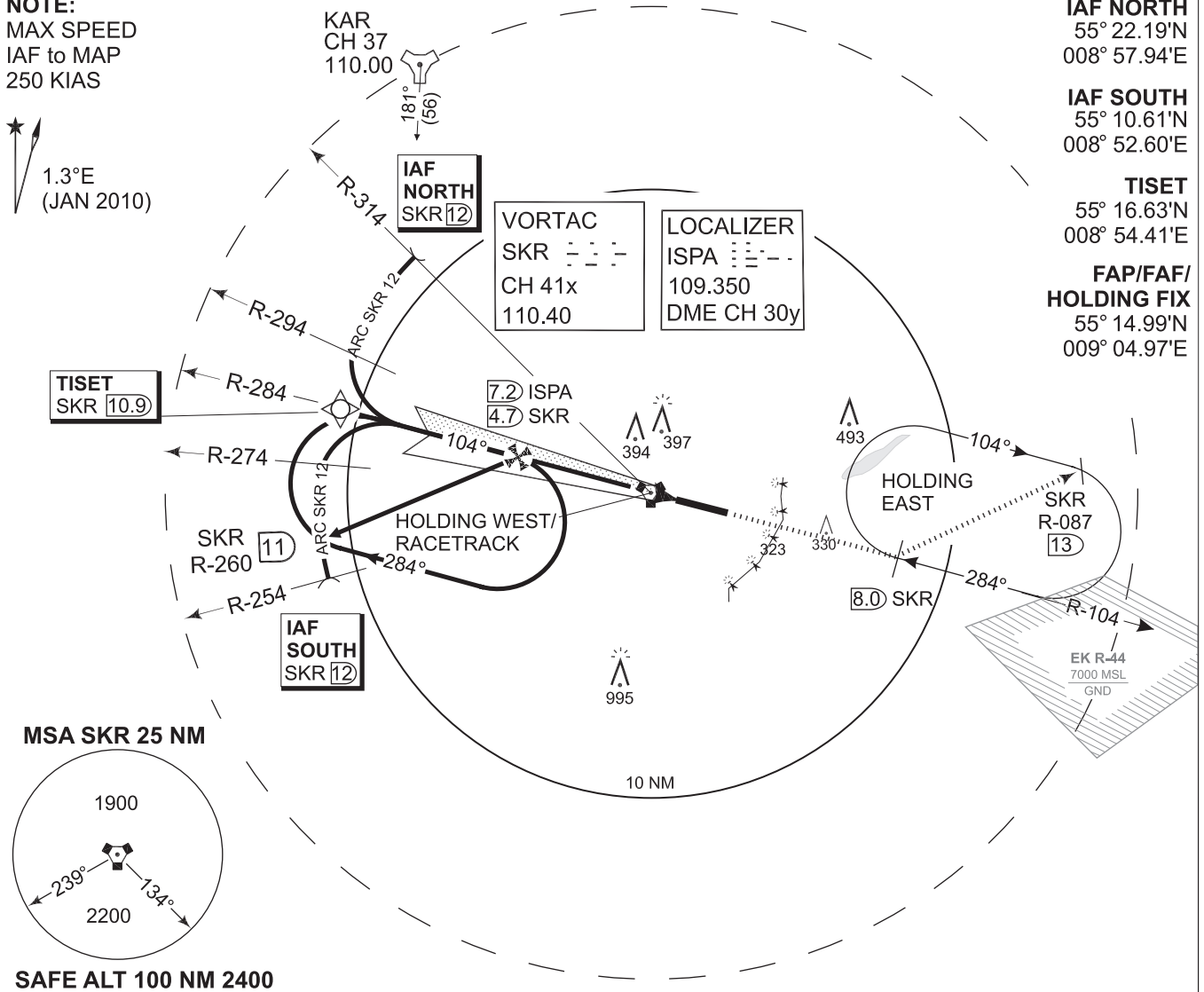
1.3°E
(JAN 2010)

IAF NORTH
55° 22.19'N
008° 57.94'E

IAF SOUTH
55° 10.61'N
008° 52.60'E

TISET
55° 16.63'N
008° 54.41'E

**FAP/FAF/
HOLDING FIX**
55° 14.99'N
009° 04.97'E



TA 3000 GS 3.00° RDH 49	GP INOP	LOCALIZER ISPA	GP INOP (CDFA 3.0° / 5.24%)					
	7.3 ISPA 4.8 SKR	4.5 ISPA 2.0 SKR	DIST TO THR (NM)	5	4	3	2	1
			DME ISPA (NM)	6.5	5.5	4.5	3.5	2.5
			DME SKR (NM)	3.9	2.9	1.9	0.9	0.1
			ALT	1770	1450	1130	820	500

MISSED APPROACH
Climb to 2000 FT on R-104 to SKR 8 DME and join holding EAST.

CAT I

5.73 TDZE 127

CATEGORY	A	B	C	D	E
S-ILS 10L	327 -800 200 (200-0.8/1.2)				
S-Localizer 10L	380 -800 253 (300-0.8/1.6)		380 -1200 253 (300-1.2/1.6)		
CIRCLING	620 -1600 493 (500-1.6)	700 -1600 573 (600-1.6)	800 -2800 673 (700-2.8)	890 -4000 763 (800-4.0)	1490 -4800 1363 (1400-4.8)

VORTAC to ILS / DME RWY 10L

55°13.53'N
009°15.84'E

SKRYDSTRUP (EKSP)

CHANGES: EDITORIAL

TACDEN FLIGHT INFORMATION 17 NOV 2011