

**TERPS
INSTRUMENT APPROACH CHART**

AD ELEV 10

**VORTAC RWY 26R
AALBORG (EKYT)**

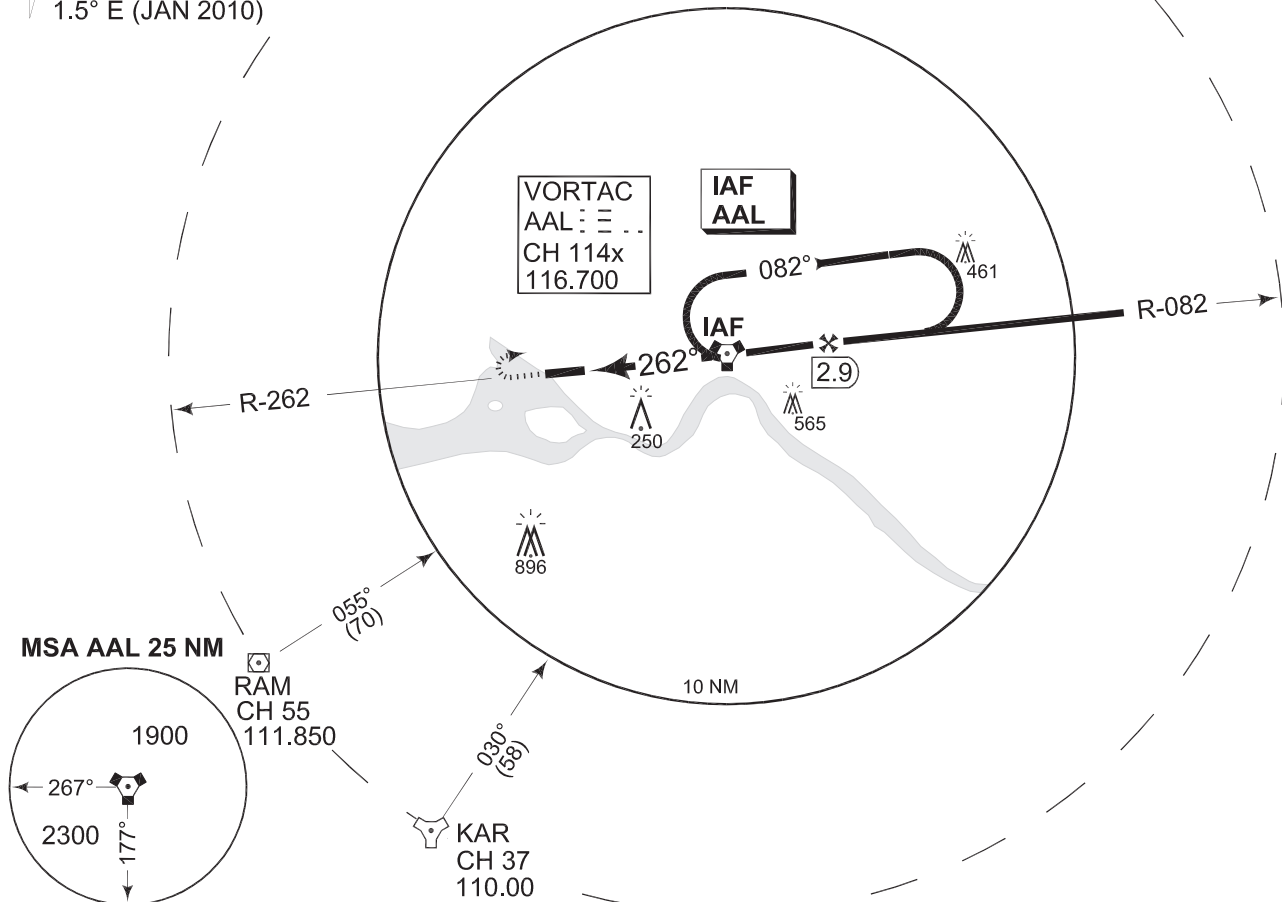
COPENHAGEN CONTROL 259.375 124.550		AALBORG ATIS 120.475	AALBORG APPROACH 309.950 123.975		AALBORG TOWER 284.775 118.300		
VORTAC AAL CH 114x	APP COURSE 262°	FAF ALT 2000 FT	DESCENT GR 260 FT/NM	MDA 440	TDZE 10	ALS length 900 M	LDA 8707 FT

NOTE:

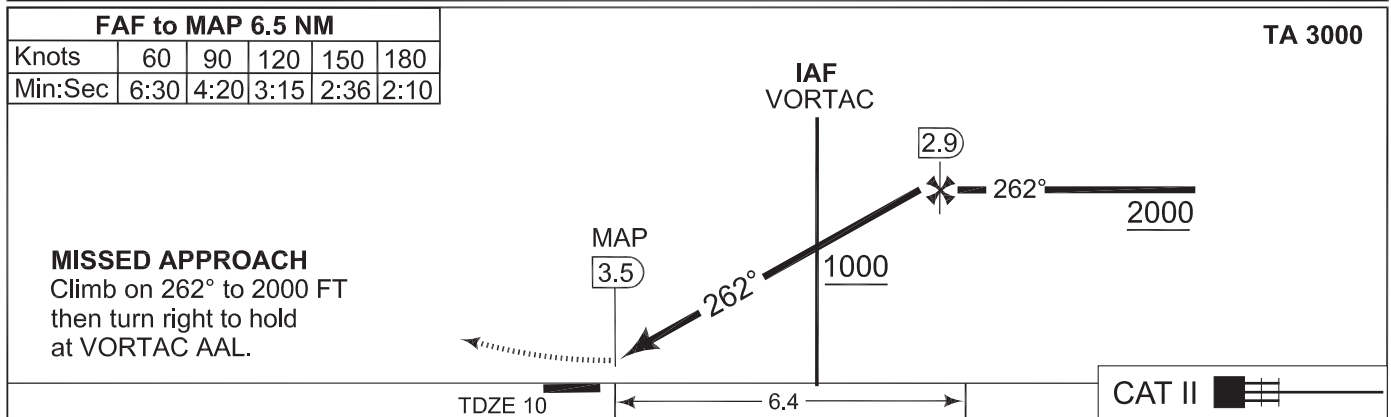
a CIRCLING N OF AD ONLY

IAF
57°06.23'N
09°59.74'E

★
1.5° E (JAN 2010)



SAFE ALT 100NM 4000



CATEGORY	A	B	C
S-VORTAC 26R	440 -800 430 (500-0.8/1.6)		440 -1200 430 (500-1.2/2.0)
CIRCLING a	440 -1600 430 (500-1.6)	460 -1600 450 (500-1.6)	500 -2400 490 (500-2.4)

VORTAC RWY 26R

57°05.57'N
009°50.95'E

AALBORG (EKYT)

CHANGES: EDITORIAL

TACDEN FLIGHT INFORMATION 22 SEP 2011