

**TERPS
INSTRUMENT APPROACH CHART**

AD ELEV 10

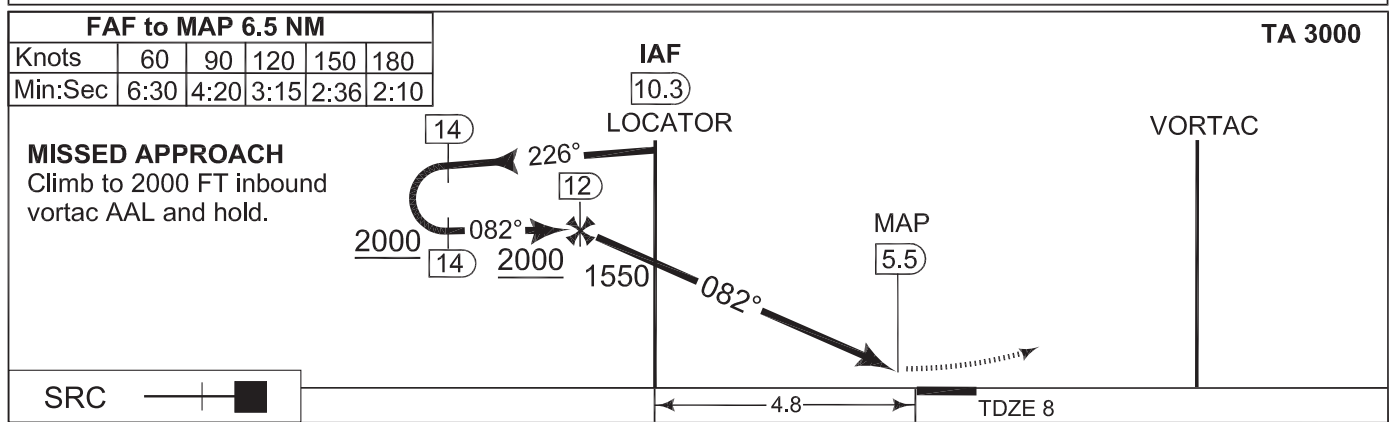
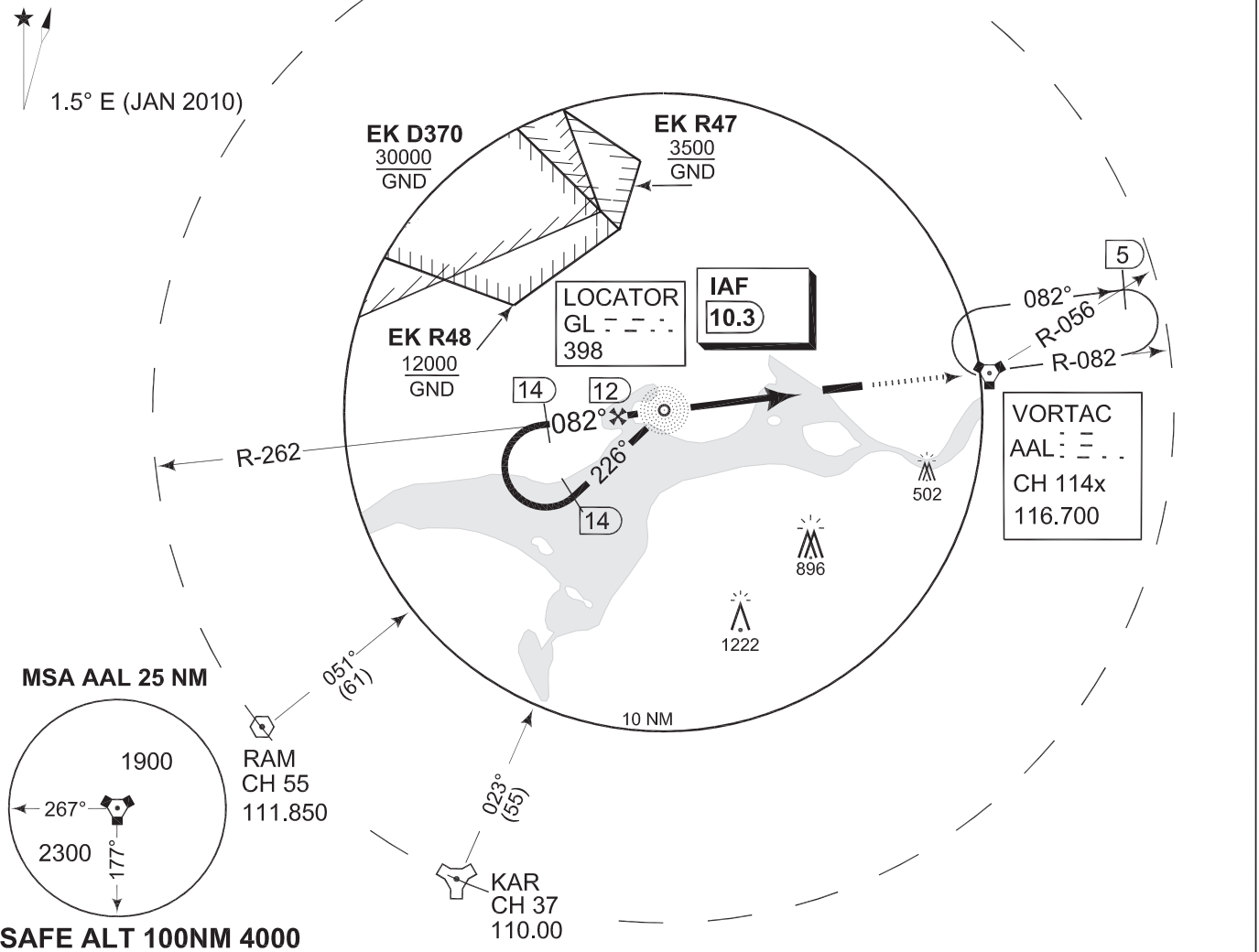
**L/DME or VORTAC RWY 08L
AALBORG (EKYT)**

COPENHAGEN CONTROL 259.375 124.550		AALBORG ATIS 120.475		AALBORG APPROACH 309.950 123.975		AALBORG TOWER 284.775 118.300		
LOCATOR GL 398	VORTAC AAL CH 114x	APP COURSE 082°	FAF ALT 2000 FT	DESCENT GR 297 FT/NM	MDA 400	TDZE 8	ALS length 470 M	LDA 8707 FT

NOTE:

a CIRCLING N OF AD ONLY

IAF
57°05.07'N
09°40.89'E



CHANGES: EDITORIAL	CATEGORY	A	B	C
	S-VORTAC 08L	400	-1600 392 (400-1.6)	
	S-NDB/DME 08L	400	-1600 392 (400-1.6)	
	CIRCLING a	400 -1600 390 (400-1.6)	460 -1600 450 (500-1.6)	500 -2400 490 (500-2.4)

L/DME or VORTAC RWY 08L

57°05.57'N
009°50.95'E

AALBORG (EKYT)

TACDEN FLIGHT INFORMATION 22 SEP 2011