

TERPS INSTRUMENT APPROACH CHART

AD ELEV 10

ILS/DME RWY 08L AALBORG (EKYT)

COPENHAGEN CONTROL 259.375 124.550		AALBORG ATIS 120.475		AALBORG APPROACH 309.950 123.975			AALBORG TOWER 284.775 118.300	
LOCALIZER/DME AE 109.90/CH 36x	APP COURSE 082°	GS INTCP ALT 2000 FT	GS 2.75°	DA 208	TDZE 8	ALS length 470 M	LDA 8707 FT	

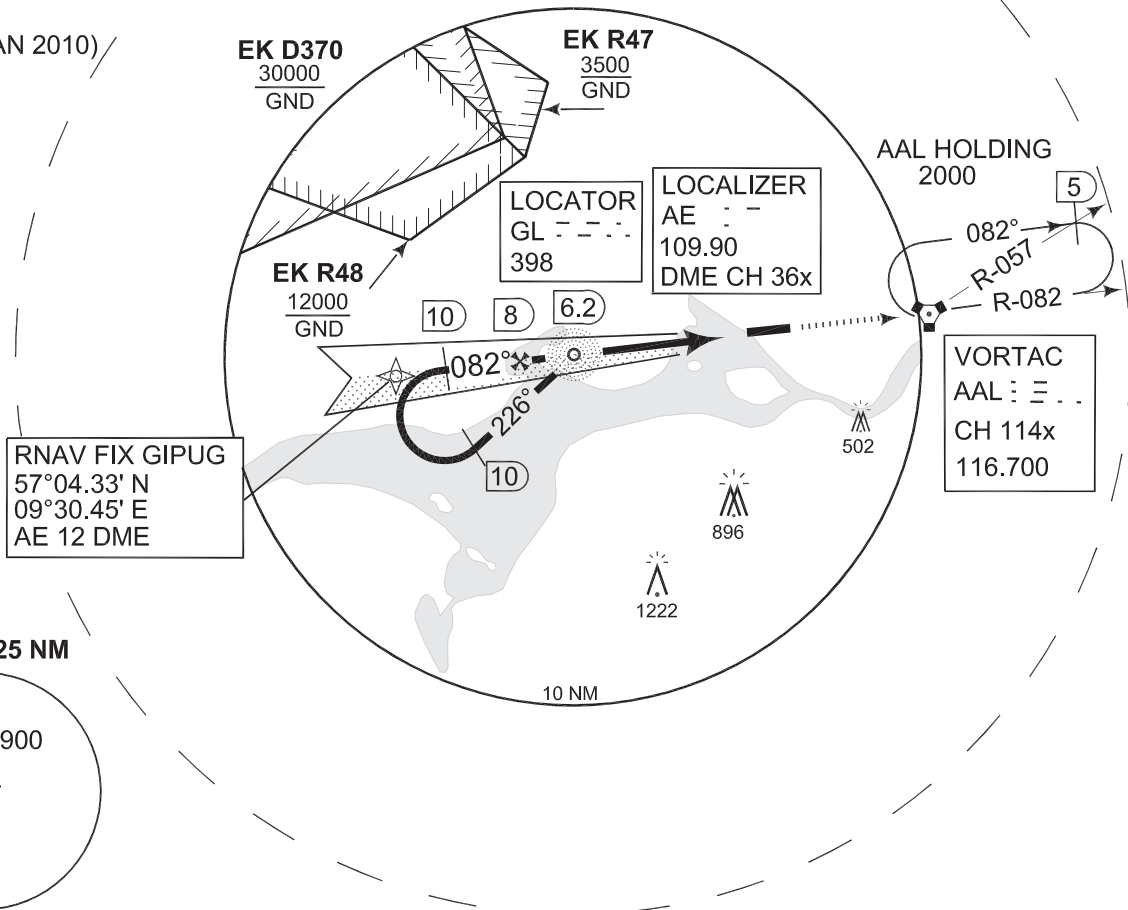
IAF
57°05.07'N
09°40.89'E

NOTE:

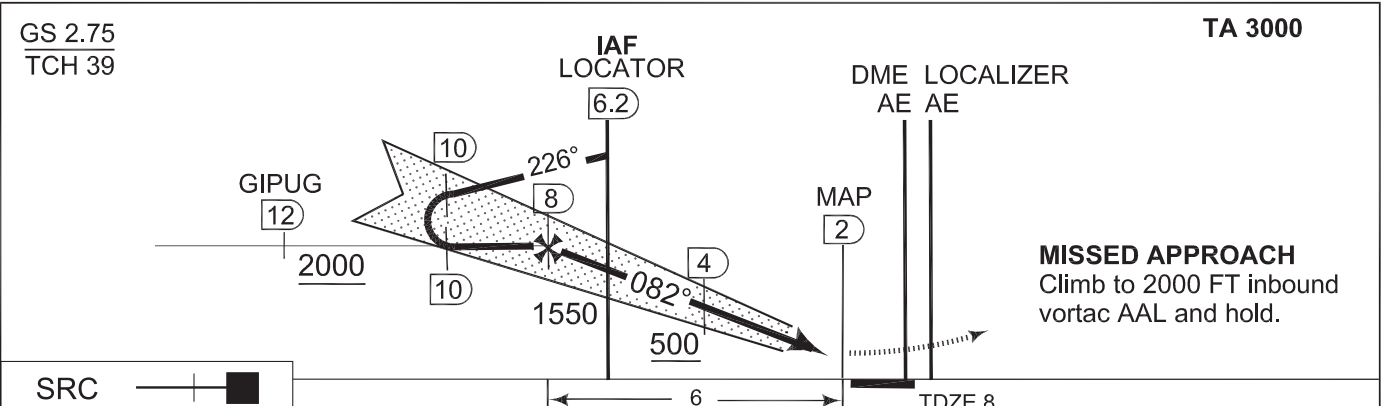
a CIRCLING N OF AD ONLY



1.5° E (JAN 2010)



SAFE ALT 100NM 4000



CATEGORY	A	B	C	D	E
S-ILS/DME 08L			208	-1200 200 (200-1.2)	
S-Localizer/DME 08L			300	-1600 292 (300-1.6)	
CIRCLING a	400 -1600 390 (400-1.6)	460 -1600 450 (500-1.6)	500 -2400 490 (500-2.4)	560 -3200 550 (600-3.2)	640 -3600 630 (700-3.6)

ILS/DME RWY 08L

57°05.57'N
009°50.95'E

AALBORG (EKYT)

CHANGES: EDITORIAL

TACDEN FLIGHT INFORMATION 22 SEP 2011