

TERPS INSTRUMENT APPROACH CHART

AD ELEV 10

HI-VORTAC RWY 08L AALBORG (EKYT)

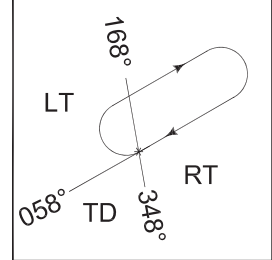
COPENHAGEN CONTROL 259.375 124.550		AALBORG ATIS 120.475		AALBORG APPROACH 309.950 123.975		AALBORG TOWER 284.775 118.300	
VORTAC AAL CH 114x	APP COURSE 082°	FAF ALT 2000 FT	DESCENT GR 277 FT/NM	MDA 420	TDZE 8	ALS length 470 M	LDA 8707 FT

NOTE:

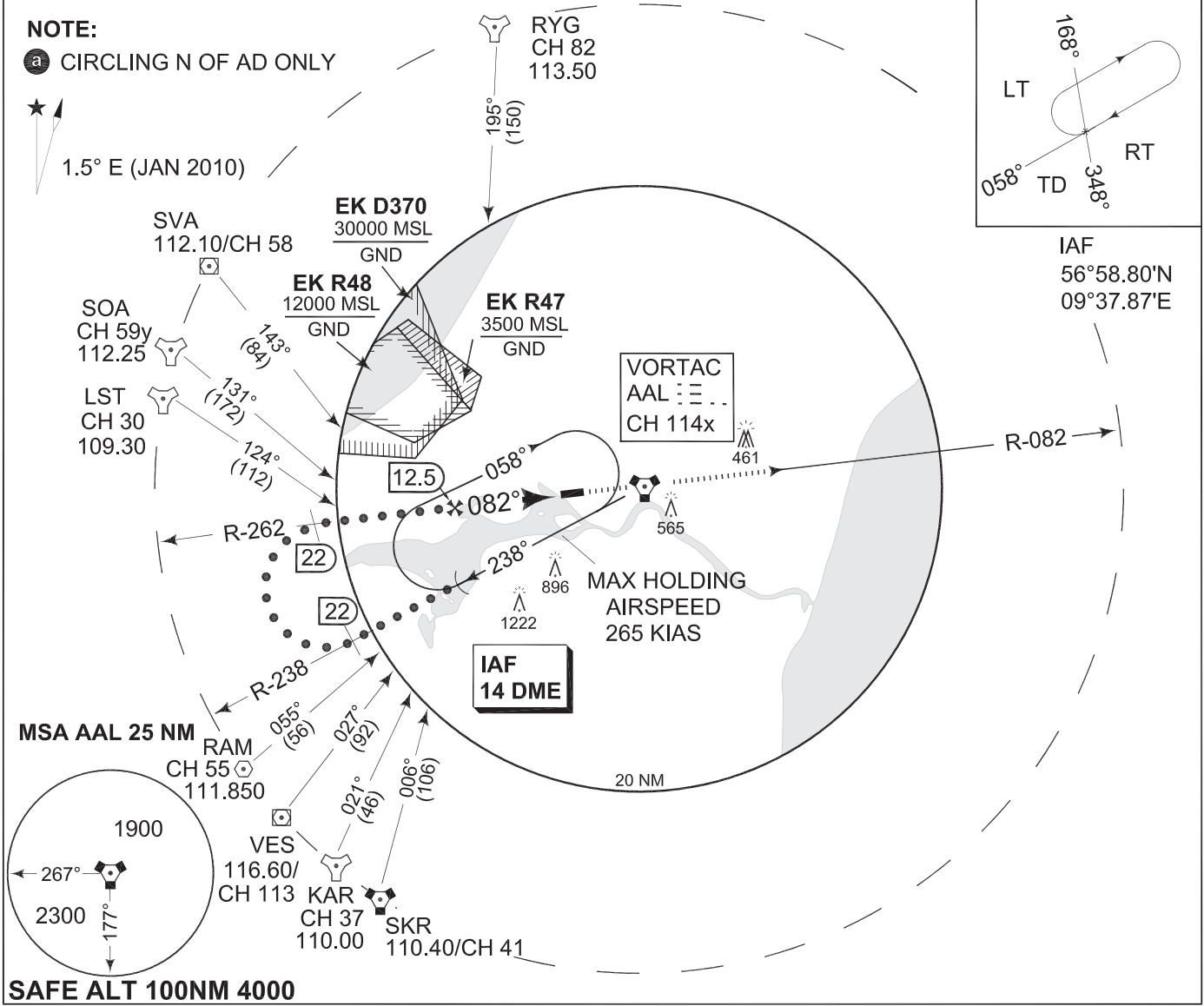
a CIRCLING N OF AD ONLY



1.5° E (JAN 2010)



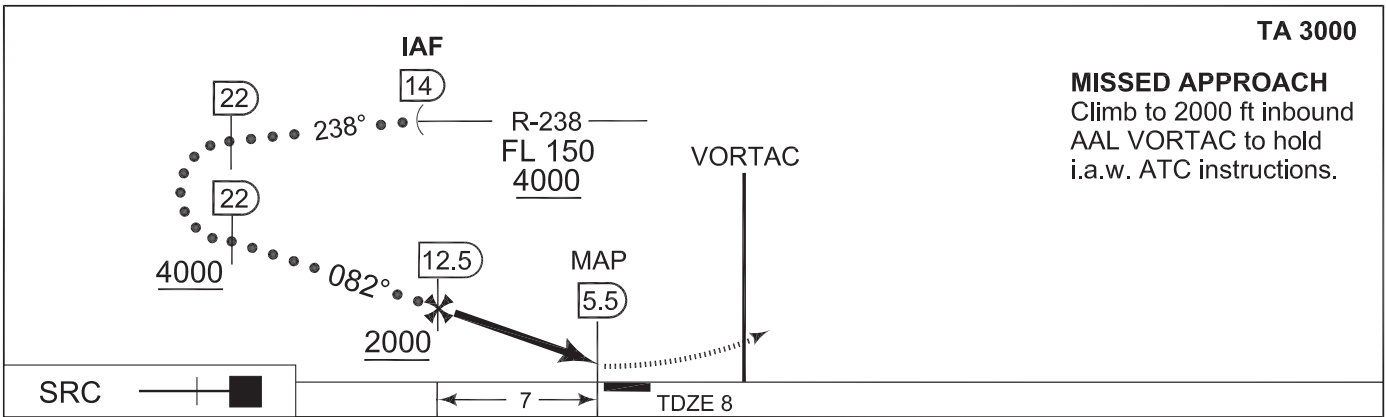
IAF
56°58.80'N
09°37.87'E



SAFE ALT 100NM 4000

TA 3000

MISSED APPROACH
Climb to 2000 ft inbound AAL VORTAC to hold i.a.w. ATC instructions.



CHANGES: EDITORIAL

TACDEN FLIGHT INFORMATION 22 SEP 2011

CATEGORY	C	D	E
S-VORTAC 08L	420 -2000 412 (500-2.0)		420 -2400 412 (500-2.4)
CIRCLING a	500 -2400 490 (500-2.4)	560 -3200 550 (600-3.2)	640 -3600 630 (700-3.6)

HI-VORTAC RWY 08L

57°05.57'N
009°50.95'E

AALBORG (EKYT)