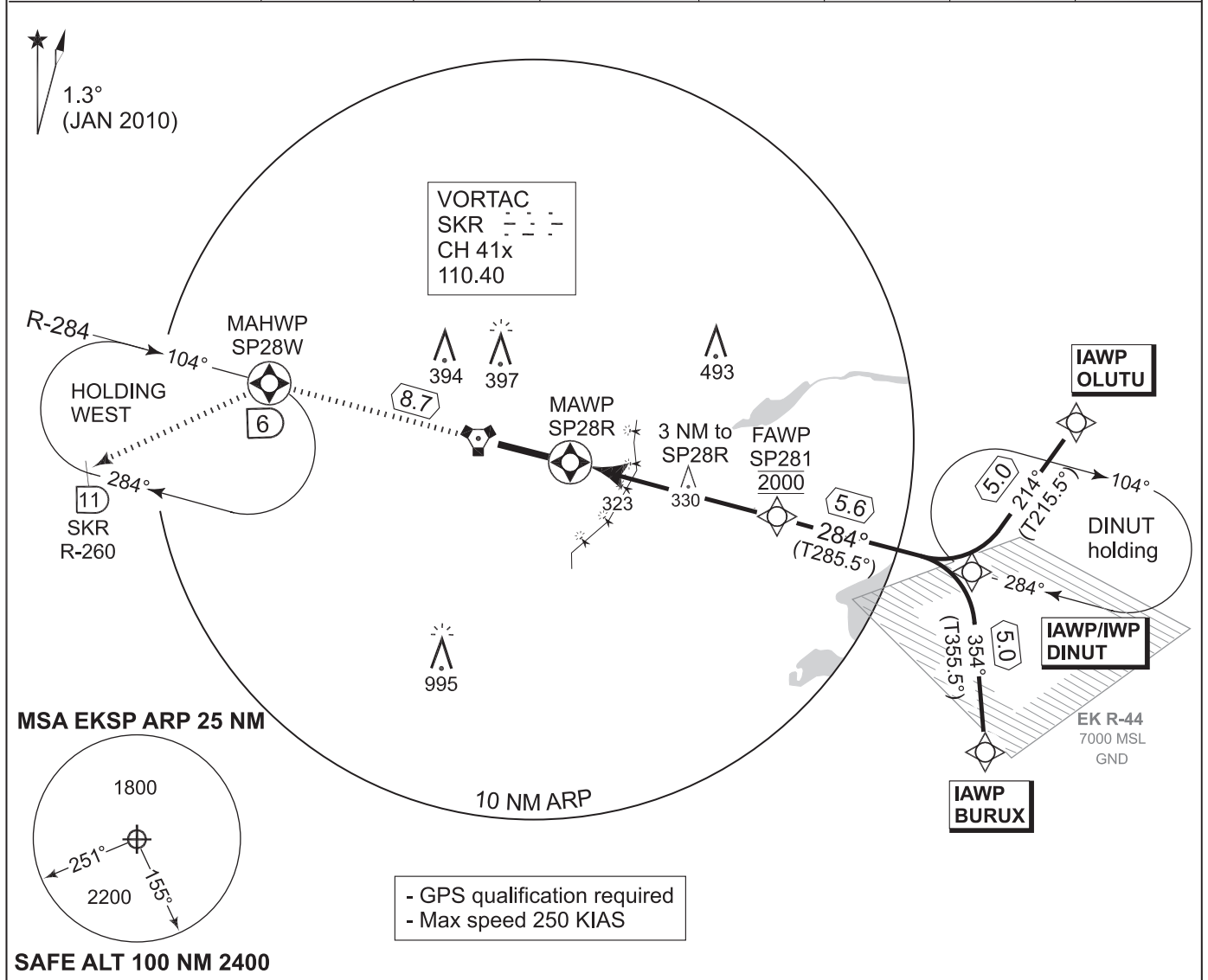


**PANS-OPS
INSTRUMENT APPROACH CHART**

AD ELEV 141

**RNAV (GNSS) RWY 28R
SKRYDSTRUP (EKSP)**

COPENHAGEN CONTROL 261.050 133.150		SKRYDSTRUP ATIS 133.900		SKRYDSTRUP APPROACH 300.075 127.475		SKRYDSTRUP TOWER 259.875 128.325	
VORTAC SKR 110.40/CH 41x	APP COURSE 284°	FAWP ALT 2000 FT	Descent GR 3.0° (5.2%)	MDA 580	THR ELEV 141	ALS length 900 M	LDA 9863 FT



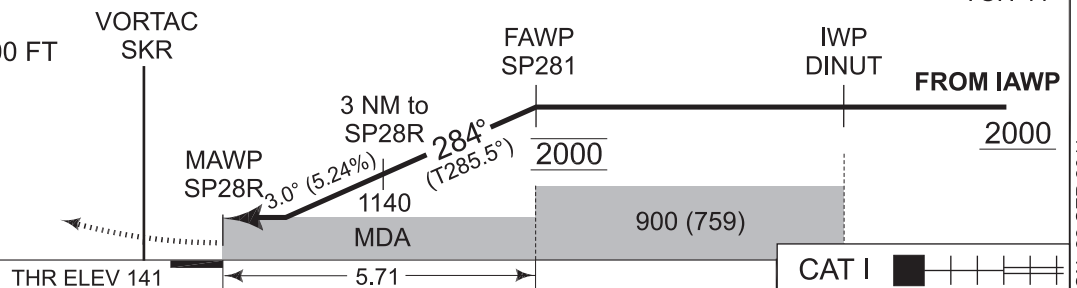
MISSED APPROACH RNAV

Climb to 2000 ft on track 284° to SP28W and join Holding WEST.

Non-RNAV: Climb to 2000 FT on SKR R-284 to 6 DME and join Holding WEST.

DIST THR	5	4	3	2	1
ALTITUDE	1780	1460	1140	820	510

TA 3000
TCH 41



CATEGORY	A	B	C	D	E
MDA/H GNSS 28R	580 - 800 439 (500-0.8/1.6)	580 - 1200 439 (500-1.2/2.0)	580 - 1600 439 (500-1.6/2.4)		

RNAV (GNSS) RWY 28R

55°13.53'N
009°15.84'E

SKRYDSTRUP (EKSP)

CHANGES: ARP

TACDEN FLIGHT INFORMATION 22 SEP 2011

RWY 28R from OLUTU APPROACH RNAV (GNSS)

OLUTU (IAWP)	55 14 02.63 N	009 41 35.27 E
DINUT (IWP)	55 09 59.00 N	009 36 29.00 E
SP281 (FAWP)	55 11 31.71 N	009 26 54.61 E
SP28R (MAWP)	55 13 02.67 N	009 17 22.11 E
SP28W (MAHWP)	55 15 16.38 N	009 02 43.99 E

RWY 28R from BURUX APPROACH RNAV (GNSS)

BURUX (IAWP)	55 05 00.81 N	009 37 08.16 E
DINUT (IWP)	55 09 59.00 N	009 36 29.00 E
SP281 (FAWP)	55 11 31.71 N	009 26 54.61 E
SP28R (MAWP)	55 13 02.67 N	009 17 22.11 E
SP28W (MAHWP)	55 15 16.38 N	009 02 43.99 E

Threshold Coordinates

RWY 28R	55 13 02.67 N	009 17 22.11 E
---------	---------------	----------------