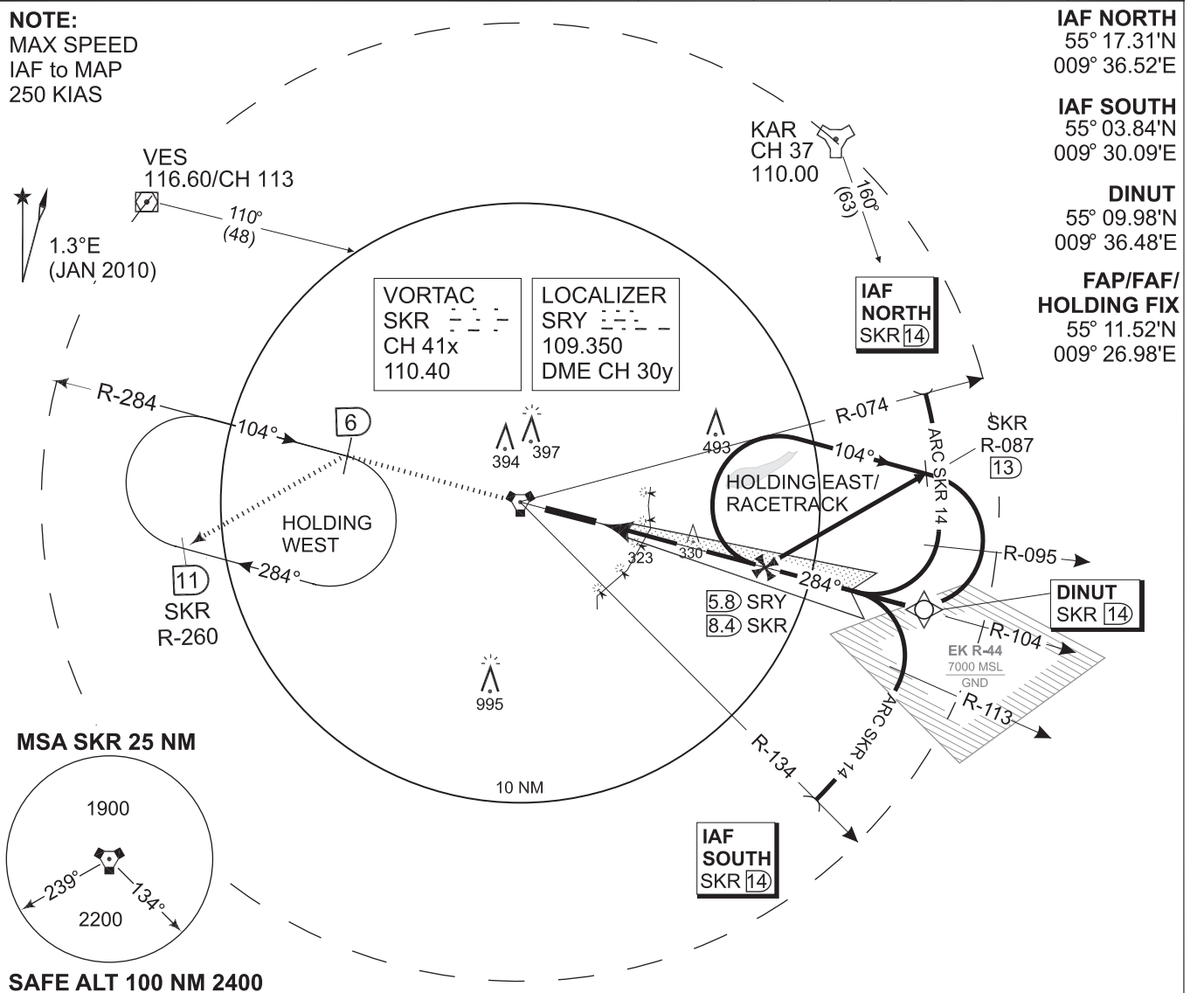


MIPS INSTRUMENT APPROACH CHART

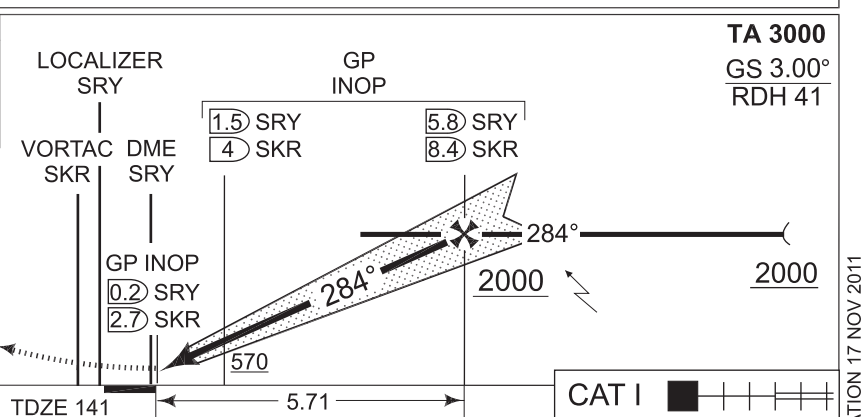
AD ELEV 141

VORTAC to ILS / DME RWY 28R SKRYDSTRUP (EKSP)

COPENHAGEN CONTROL 261.050 133.150		SKRYDSTRUP ATIS 133.900		SKRYDSTRUP APPROACH 300.075 127.475			SKRYDSTRUP TOWER 259.875 128.325		
VORTAC SKR 110.40/CH 41x	Localizer-DME SRY 109.35/CH 30y	APP COURSE 284°	FAF ALT 2000 FT	GS 3.00°	DA 341	TDZE 141	ALS length 900 M	LDA 9863 FT	



GP INOP (CDFA 3.0° / 5.24%)					
DIST TO THR (NM)	1	2	3	4	5
DME SRY (NM)	1.1	2.1	3.1	4.1	5.1
DME SKR (NM)	3.7	4.7	5.7	6.7	7.7
ALT	500	820	1140	1460	1780



MISSED APPROACH
Climb to 2000 FT on R-284 to SKR 6 DME and join holding WEST.

CATEGORY	A	B	C	D	E
S-ILS/DME 28R	341 -800 200 (200-0.8/1.2)				
S-Localizer 28R	470 -800 329 (400-0.8/1.6)				470 -1600 329 (400-1.6/2.0)
CIRCLING	620 -1600 479 (500-1.6)	700 -1600 559 (600-1.6)	800 -2800 659 (700-2.8)	890 -4000 749 (800-4.0)	1490 -4800 1349 (1400-4.8)

VORTAC to ILS / DME RWY 28R SKRYDSTRUP (EKSP)

55°13.53'N
009°15.84'E

CHANGES: EDITORIAL

TACDEN FLIGHT INFORMATION 17 NOV 2011