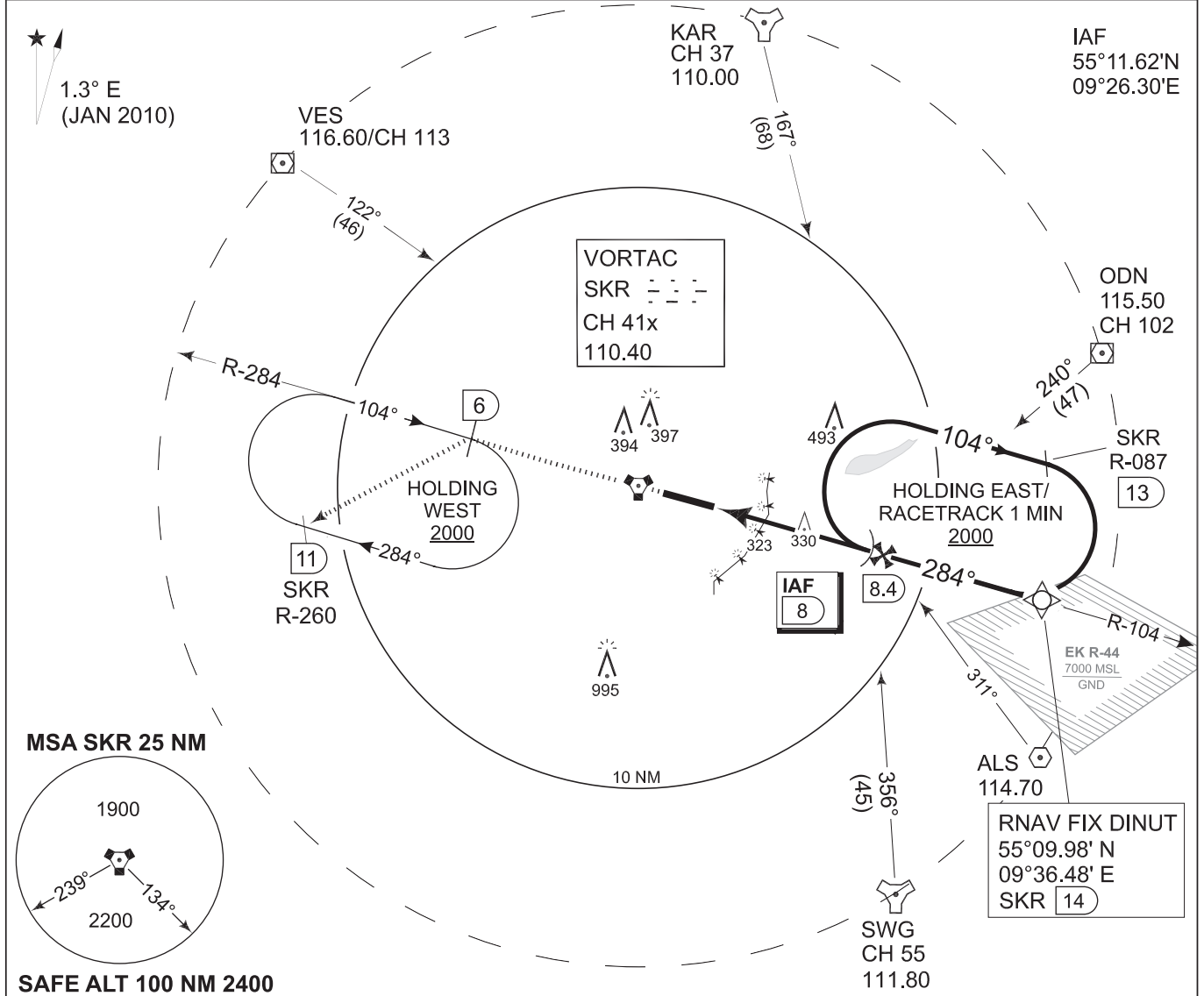


**MIPS
INSTRUMENT APPROACH CHART**

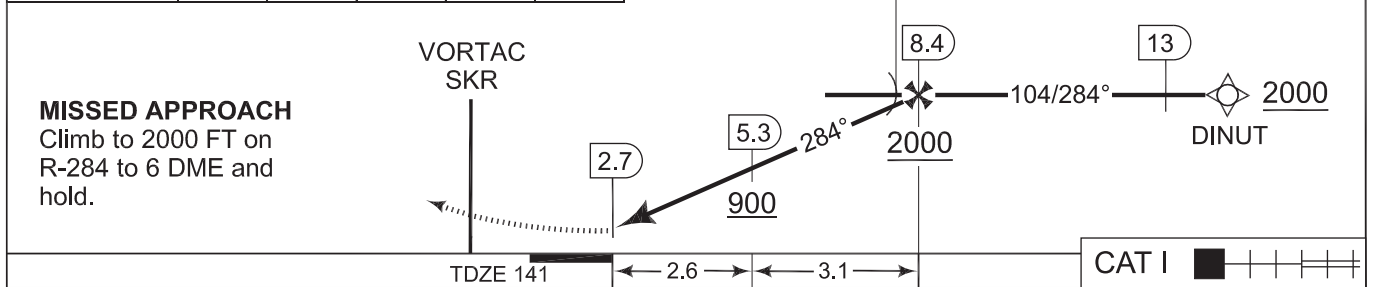
**VORTAC RWY 28R
SKRYDSTRUP (EKSP)**

AD ELEV 141

COPENHAGEN CONTROL 261.050 133.150		SKRYDSTRUP ATIS 133.900		SKRYDSTRUP APPROACH 300.075 127.475		SKRYDSTRUP TOWER 259.875 128.325	
VORTAC SKR 110.40/CH 41x	APP COURSE 284°	FAF ALT 2000 FT	DESCENT GR 319 FT/NM	MDA 570	TDZE 141	ALS length 900 M	LDA 9863 FT



CDFA 3.0° / 5.24%					
DME SKR	4	5	6	7	8
DIST to THR	1.3	2.3	3.3	4.3	5.3
ALT	610	930	1250	1560	1880



CATEGORY	A	B	C	D	E
S-VORTAC 28R	570 -800 429 (500-0.8/1.6)	570 -1200 429 (500-1.2/2.0)	570 -1200 429 (500-1.2/2.4)		
CIRCLING	620 -1600 479 (500-1.6)	700 -1600 559 (600-1.6)	800 -2800 659 (700-2.8)	890 -4000 749 (800-4.0)	1490 -4800 1349 (1400-4.8)

VORTAC RWY 28R

55°13.53'N
009°15.84'E

SKRYDSTRUP (EKSP)

CHANGES: EDITORIAL

TACDEN FLIGHT INFORMATION 17 NOV 2011