

MIPS INSTRUMENT APPROACH CHART

ILS/DME RWY 28R SKRYDSTRUP (EKSP)

AD ELEV 141

COPENHAGEN CONTROL 261.050 133.150		SKRYDSTRUP ATIS 133.900	SKRYDSTRUP APPROACH 300.075 127.475		SKRYDSTRUP TOWER 259.875 128.325	
VORTAC SKR 110.40/CH 41x	Localizer-DME SRY 109.35/CH 30y	APP COURSE 284°	FAP/FAF ALT 2200 FT	GS 3.00°	DA 341	TDZE 141
ALS length 900 M		LDA 9863 FT				

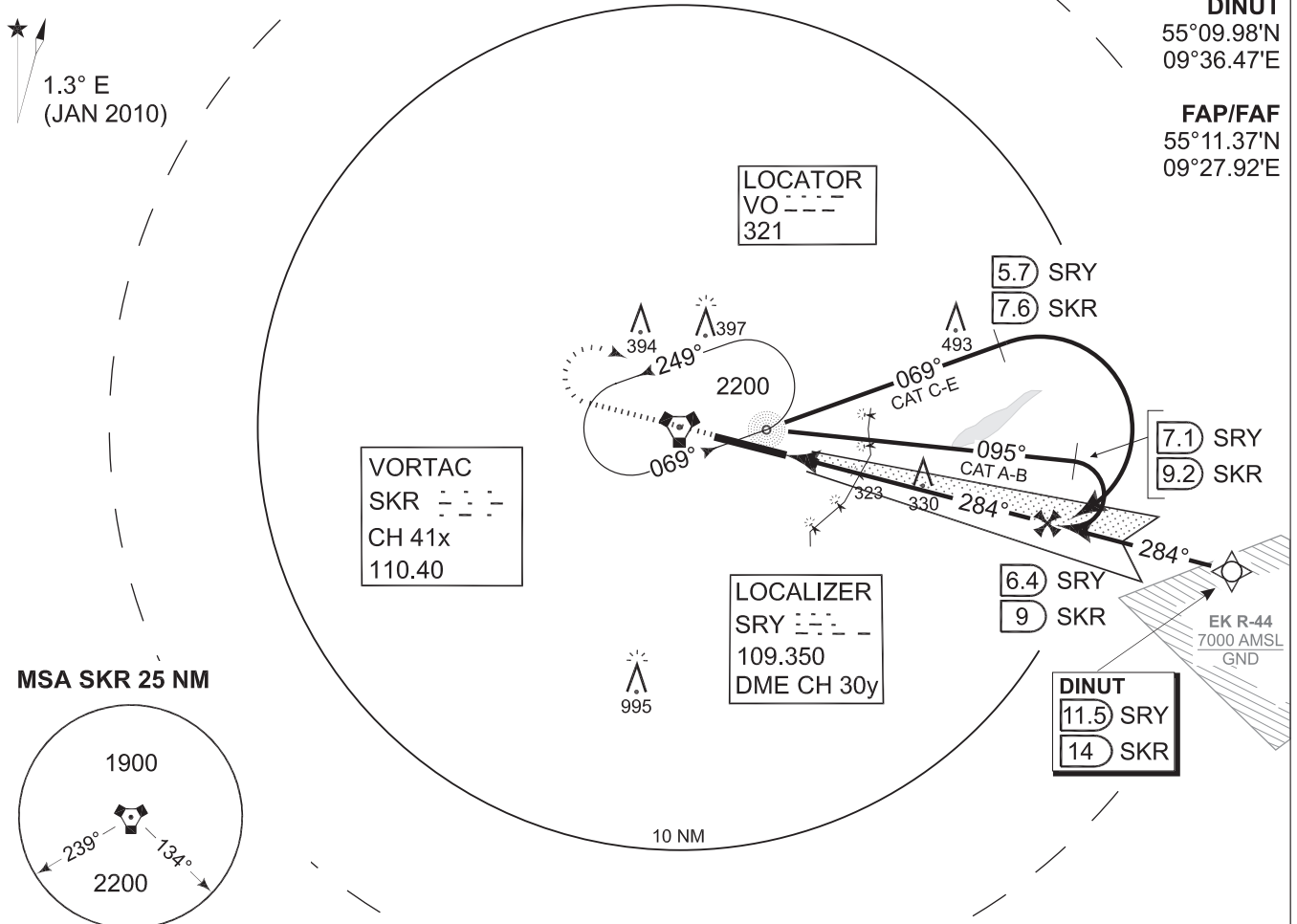
NOTE:
SPEED RESTRICTION ACFT CAT C-E:
Base turn limited to 240 KIAS maximum

IAF (L VO)
55°13.48'N
09°16.42'E

DINUT
55°09.98'N
09°36.47'E

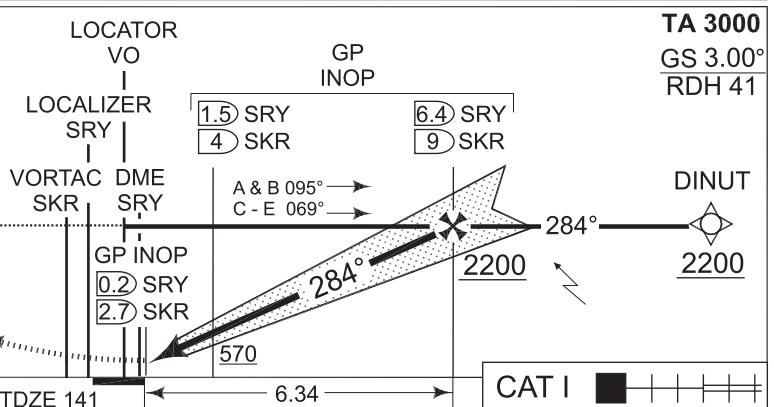
FAP/FAF
55°11.37'N
09°27.92'E

★
1.3° E
(JAN 2010)



SAFE ALT 100NM 2400

GP INOP (CDFA 3.0° / 5.24%)						
DIST TO THR (NM)	1	2	3	4	5	6
DME SRY (NM)	1.1	2.1	3.1	4.1	5.1	6.1
DME SKR (NM)	3.7	4.7	5.7	6.7	7.7	8.7
ALT	500	820	1140	1460	1780	2100



MISSED APPROACH
Climb on RWY HDG
to 2200 FT. Turn right
to join holding at L VO.

CATEGORY	A	B	C	D	E
S-ILS/DME 28R	341 -800 200 (200-0.8/1.2)				
S-Localizer 28R	470 -800 329 (400-0.8/1.6)		470 -1600 329 (400-1.6/2.0)		
CIRCLING	620 -1600 479 (500-1.6)	700 -1600 559 (600-1.6)	800 -2800 659 (700-2.8)	890 -4000 749 (800-4.0)	1490 -4800 1349 (1400-4.8)

ILS/DME RWY 28R

55°13.53'N
009°15.84'E

SKRYDSTRUP (EKSP)

CHANGES: EDITORIAL

TACDEN FLIGHT INFORMATION 17 NOV 2011