

MIPS INSTRUMENT APPROACH CHART

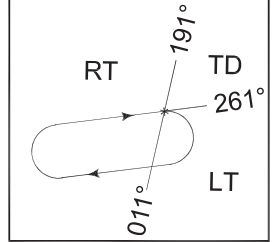
AD ELEV 141

HI-VORTAC RWY 28R SKRYDSTRUP (EKSP)

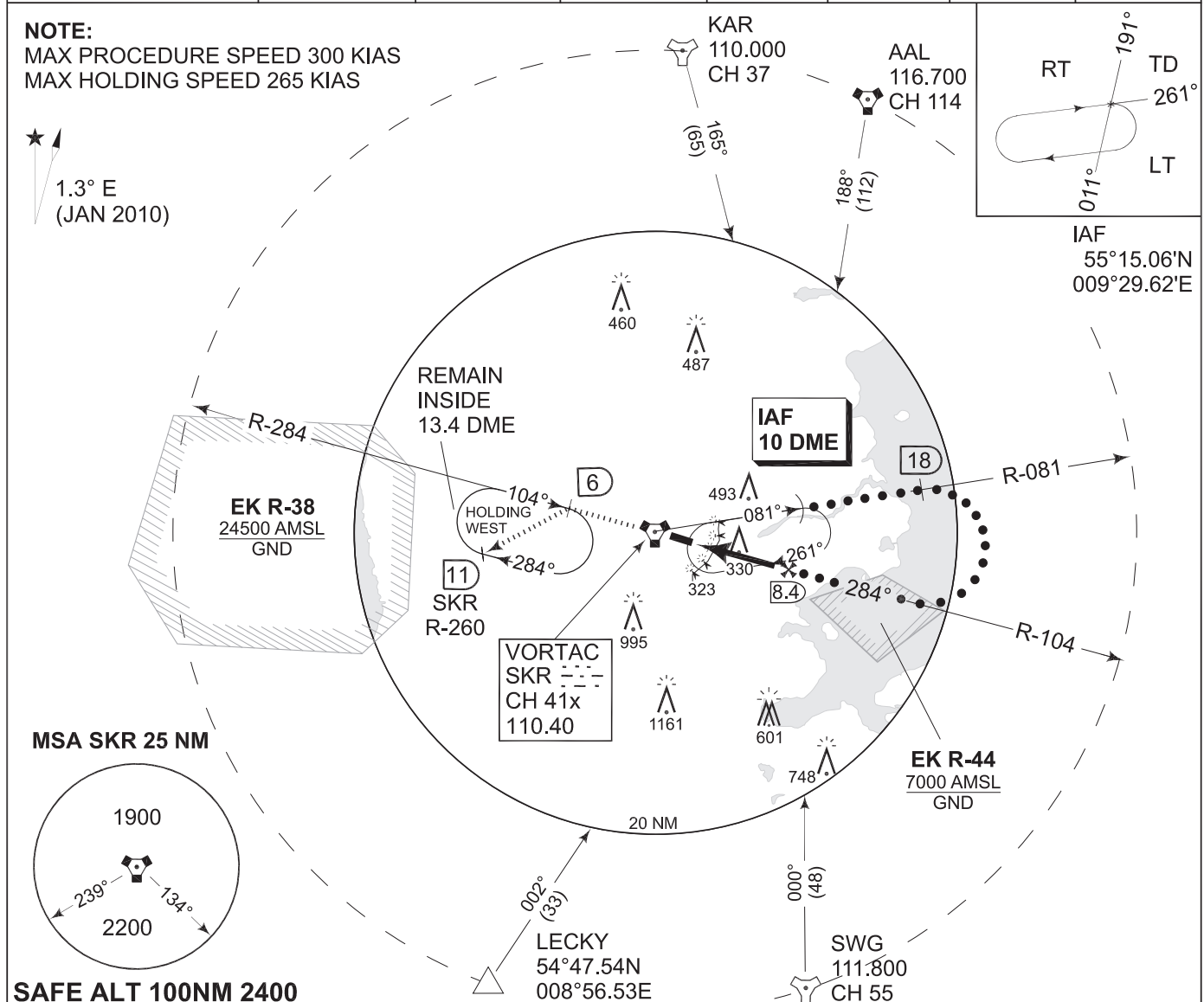
COPENHAGEN CONTROL 261.050 133.150		SKRYDSTRUP ATIS 133.900		SKRYDSTRUP APPROACH 300.075 127.475		SKRYDSTRUP TOWER 259.875 128.325	
VORTAC SKR 110.40/CH 41x	APP COURSE 284°	FAF ALT 2000 FT	DESCENT GR 319 FT/NM	MDA 570	TDZE 141	ALS length 900 M	LDA 9863 FT

NOTE:
MAX PROCEDURE SPEED 300 KIAS
MAX HOLDING SPEED 265 KIAS

★
1.3° E
(JAN 2010)

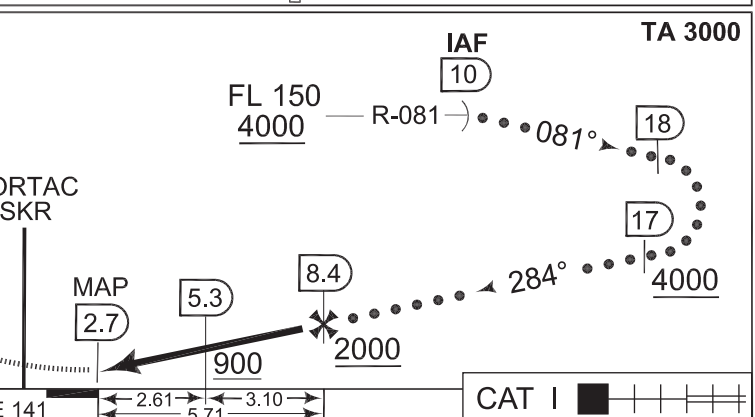


IAF
55°15.06'N
009°29.62'E



CDFA 3.0° / 5.24%					
DME SKR	4	5	6	7	8
DIST to THR	1.3	2.3	3.3	4.3	5.3
ALT	610	930	1250	1560	1880

MISSED APPROACH
Initiate climb to 2000 FT. After passing VORTAC SKR intercept R-284 outbound. At SKR 6 DME join holding WEST.



CATEGORY	C	D	E
S-VORTAC 28R	570 - 1200 429 (500-1.2/2.0)	570 - 1200 429 (500-1.2/2.4)	
CIRCLING	800 - 2800 659 (700-2.8)	890 - 4000 749 (800-4.0)	1490 - 4800 1349 (1400-4.8)

HI-VORTAC RWY 28R

55°13.53'N
009°15.84'E

SKRYDSTRUP (EKSP)

CHANGES: PROCEDURE REVISED

TACDEN FLIGHT INFORMATION 12 JAN 2012