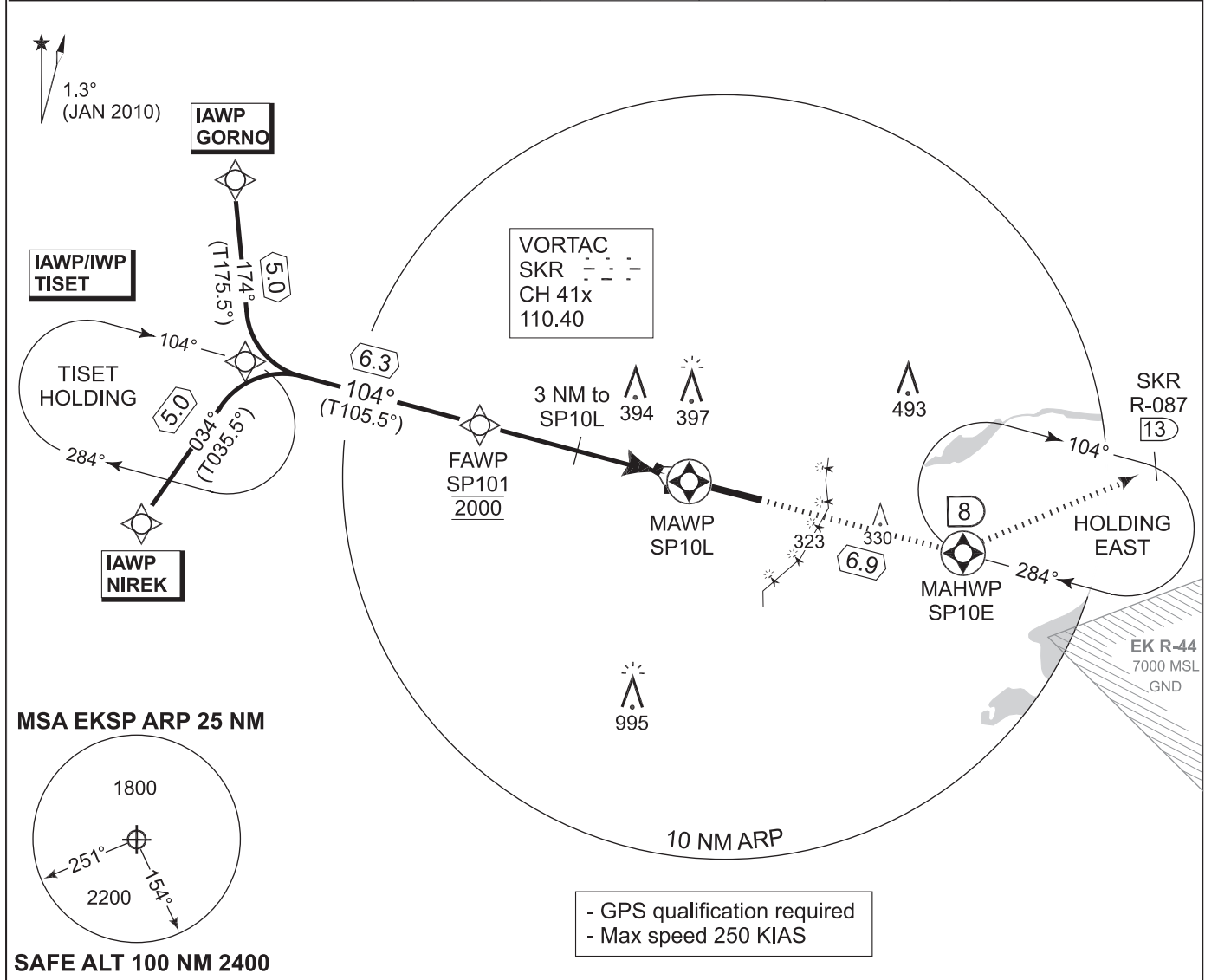


**PANS-OPS
INSTRUMENT APPROACH CHART**

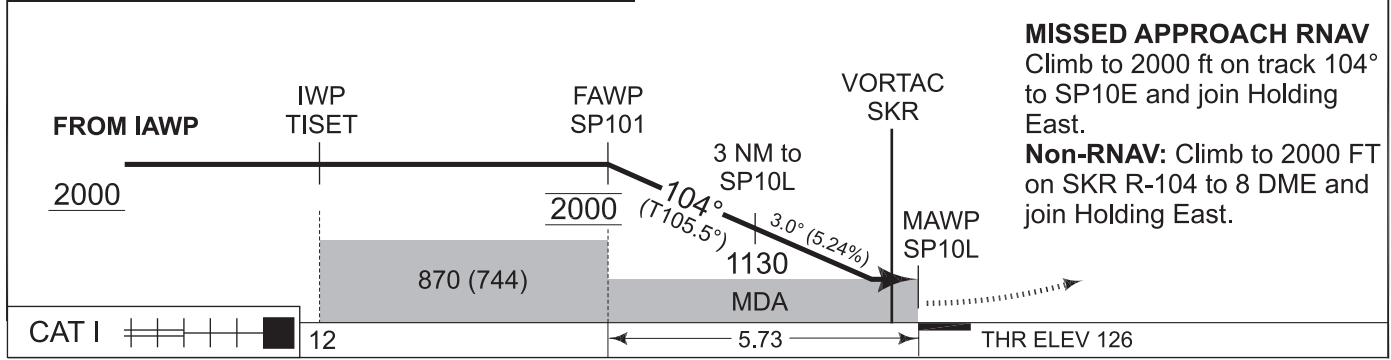
AD ELEV 141

**RNAV (GNSS) RWY 10L
SKRYDSTRUP (EKSP)**

COPENHAGEN CONTROL 261.050 133.150		SKRYDSTRUP ATIS 133.900		SKRYDSTRUP APPROACH 300.075 127.475		SKRYDSTRUP TOWER 259.875 128.325	
VORTAC SKR 110.40/CH 41x	APP COURSE 104°	FAWP ALT 2000 FT	Descent GR 3.0° (5.2%)	MDA 490	THR ELEV 126	ALS length 900 M	LDA 9863 FT



DIST THR	5	4	3	2	1	TA 3000 TCH 49
ALTITUDE	1770	1450	1130	820	500	



CATEGORY	A	B	C	D	E
MDA/H GNSS 10L	490 - 800 364 (400-0.8/1.6)			490 - 1200 364 (400-1.2/2.0)	

RNAV (GNSS) RWY 10L

55°13.53'N
009°15.84'E

SKRYDSTRUP (EKSP)

CHANGES: ARP

TACDEN FLIGHT INFORMATION 22 SEP 2011

RWY 10L from GORNO APPROACH RNAV (GNSS)

GORNO (IAWP)	55 21 36.42 N	008 53 40.61 E
TISET (IWP)	55 16 38.04 N	008 54 24.63 E
SP101 (FAWP)	55 14 59.49 N	009 04 58.83 E
SP10L (MAWP)	55 13 28.56 N	009 14 38.19 E
SP10E (MAHWP)	55 11 41.35 N	009 26 14.79 E

RWY 10L from NIREK APPROACH RNAV (GNSS)

NIREK (IAWP)	55 12 32.90 N	008 49 23.52 E
TISET (IWP)	55 16 38.04 N	008 54 24.63 E
SP101 (FAWP)	55 14 59.49 N	009 04 58.83 E
SP10L (MAWP)	55 13 28.56 N	009 14 38.19 E
SP10E (MAHWP)	55 11 41.35 N	009 26 14.79 E

Threshold Coordinates

RWY 10L	55 13 28.56 N	009 14 38.19 E
---------	---------------	----------------