

MIPS INSTRUMENT APPROACH CHART

AD ELEV 141

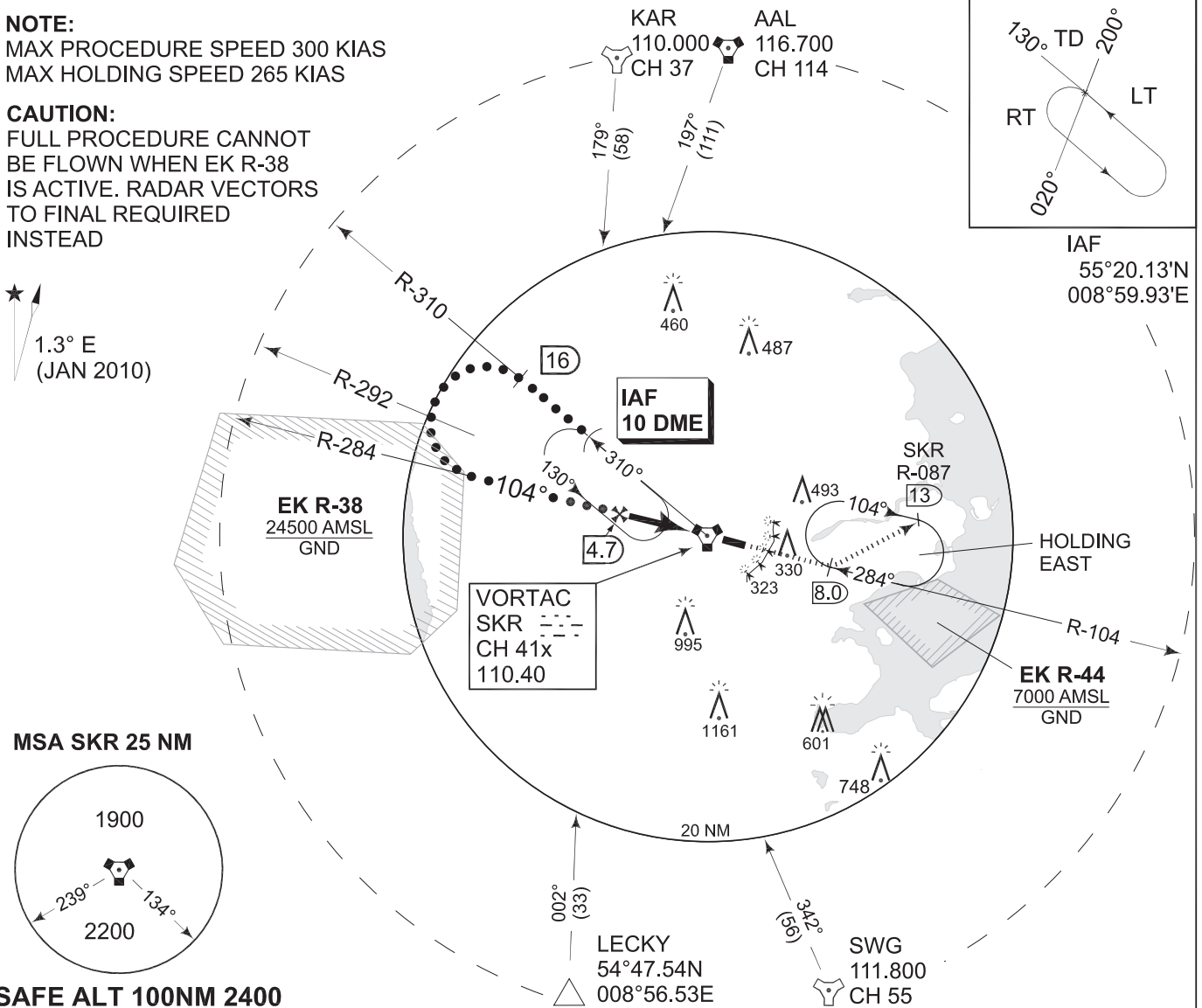
HI-VORTAC RWY 10L SKRYDSTRUP (EKSP)

COPENHAGEN CONTROL 261.050 133.150		SKRYDSTRUP ATIS 133.900		SKRYDSTRUP APPROACH 300.075 127.475		SKRYDSTRUP TOWER 259.875 128.325	
VORTAC SKR 110.40/CH 41x	APP COURSE 104°	FAF ALT 2000 FT	DESCENT GR 319 FT/NM	MDA 470	TDZE 127	ALS length 900 M	LDA 9863 FT

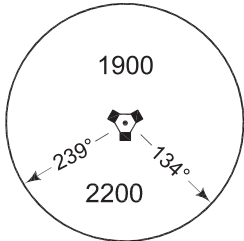
NOTE:
MAX PROCEDURE SPEED 300 KIAS
MAX HOLDING SPEED 265 KIAS

CAUTION:
FULL PROCEDURE CANNOT BE FLOWN WHEN EK R-38 IS ACTIVE. RADAR VECTORS TO FINAL REQUIRED INSTEAD

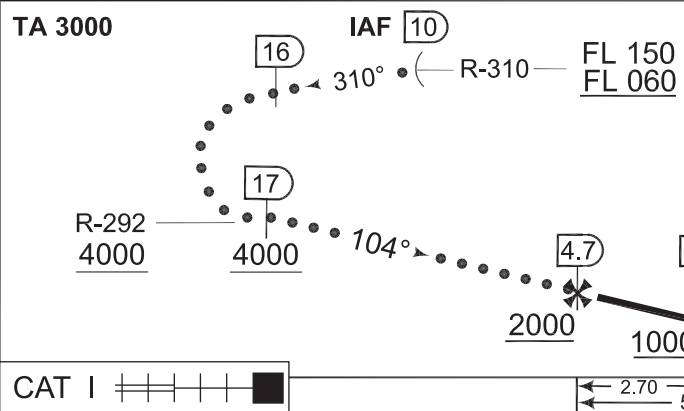
★ 1.3° E (JAN 2010)



MSA SKR 25 NM



SAFE ALT 100NM 2400



CDFA 3.0° / 5.24%					
DME SKR	4	3	2	1	0
DIST to THR	5.1	4.1	3.1	2.1	1.1
ALT	1790	1470	1150	830	520

MISSED APPROACH
Initiate climb to 2000 FT.
Follow SKR R-104 outbound.
At SKR 8 DME join holding EAST.

CAT I | 2.70 | 5.73 | 3.06 | TDZE 127

CATEGORY	C	D	E
S-VORTAC 11L	470 - 1200 343 (400-1.2/1.6)	470 - 1200 343 (400-1.2/2.0)	
CIRCLING	800 - 2800 659 (700-2.8)	890 - 4000 749 (800-4.0)	1490 - 4800 1349 (1400-4.8)

HI-VORTAC RWY 10L

55°13.53'N
009°15.84'E

SKRYDSTRUP (EKSP)

CHANGES: REVISED PROCEDURE

TACDEN FLIGHT INFORMATION 12 JAN 2012