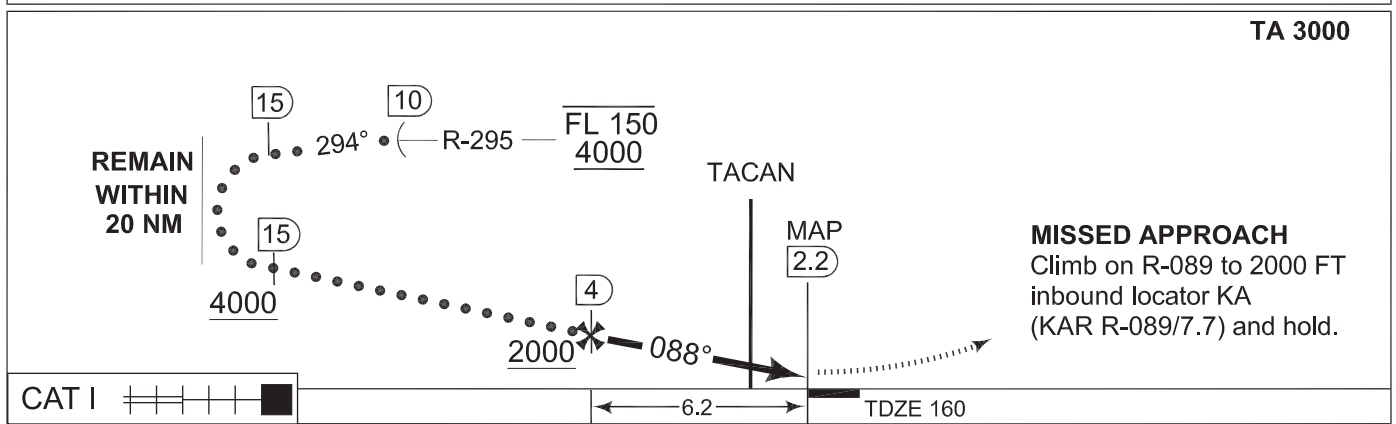
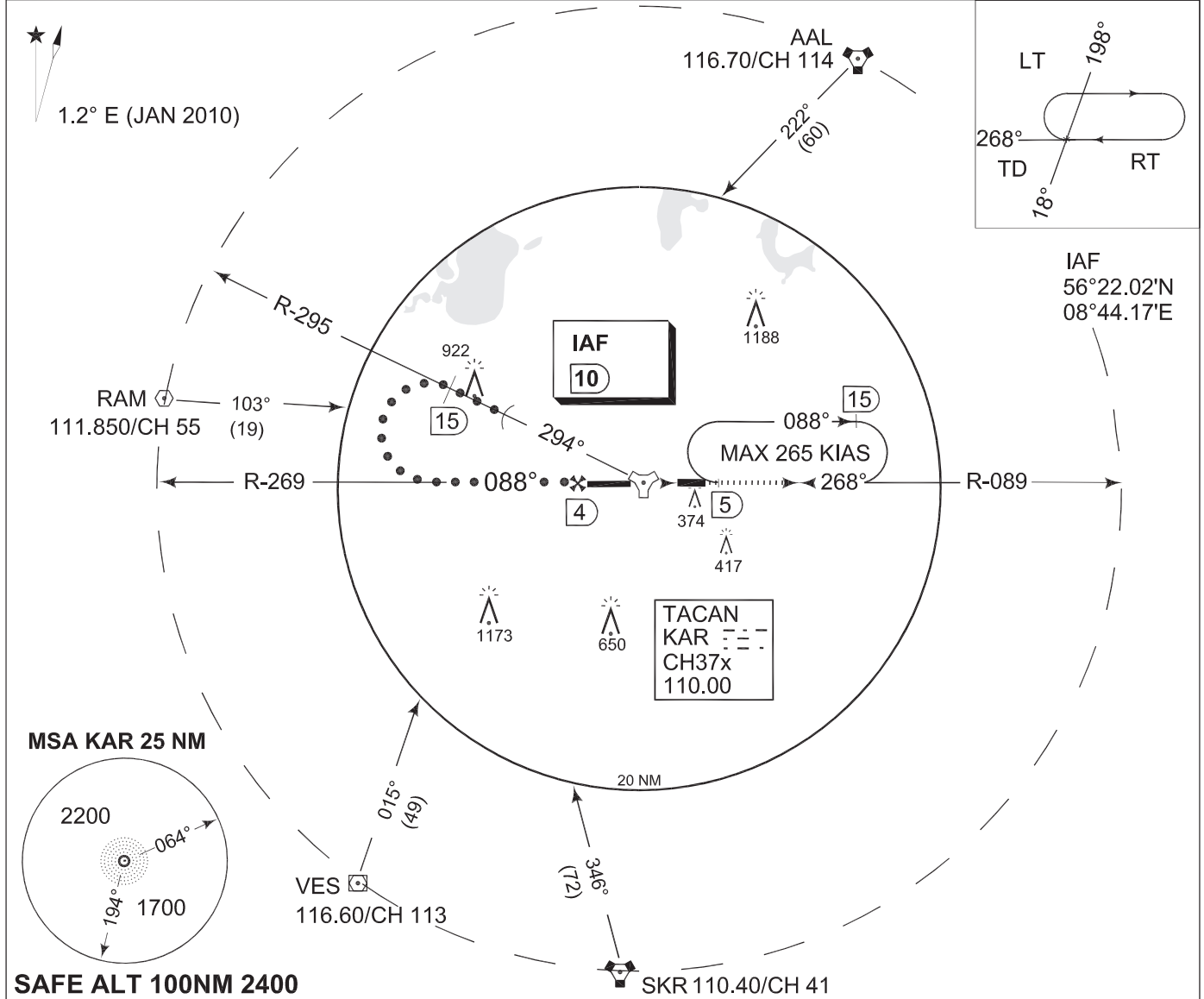


**TERPS  
INSTRUMENT APPROACH CHART**

AD ELEV 171

**HI-TACAN RWY 09R  
KARUP (EKKA)**

COPENHAGEN CONTROL 259.375 124.550		KARUP ATIS 120.575		KARUP APPROACH 292.750 120.425		KARUP TOWER 241.650 119.575	
TACAN KAR 110.00/CH 37x	APP COURSE 088°	FAF ALT 2000 FT	DESCENT GR 292 FT/NM	MDA <b>500</b>	TDZE 160	ALS length 900 M	LDA 9607 FT



CATEGORY	C	D	E
S-TACAN 09R	<b>500</b> -1200 340 (400-1.2/1.6)		<b>500</b> -1200 340 (400-1.2/2.0)
CIRCLING	<b>680</b> -2400 510 (600-2.4)	<b>720</b> -3200 550 (600-3.2)	<b>780</b> -3600 610 (700-3.6)

**HI-TACAN RWY 09R**

56°17.85'N  
009°07.48'E

**KARUP (EKKA)**

CHANGES: AD ELEV

TACDEN FLIGHT INFORMATION 08 MAR 2012