

**TERPS INSTRUMENT APPROACH CHART**

AD ELEV 171

**L/DME RWY 09R  
KARUP (EKKA)**

COPENHAGEN CONTROL 259.375 124.550		KARUP ATIS 120.575		KARUP APPROACH 292.750 120.425		KARUP TOWER 241.650 119.575	
LOCATOR KP 351	DME KR CH18y	APP COURSE 088°	FAF ALT 1200 FT	DESCENT GR 325 FT/NM	MDA <b>480</b>	TDZE 160	LDA 9607 FT

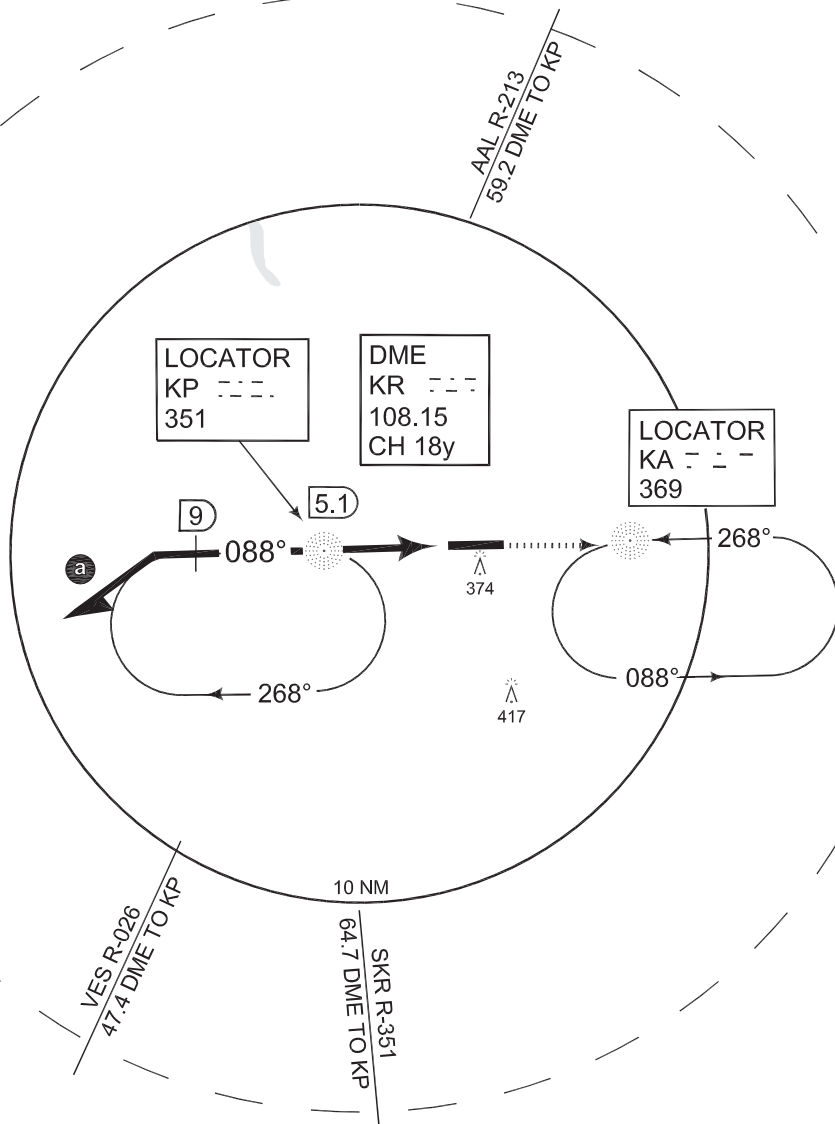
**Note:**

**a** REMAIN WITHIN KR 15.1 DME

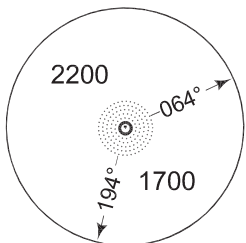
IAF (L KP)  
56°17.80'N  
08°58.11'E



1.2° E (JAN 2010)

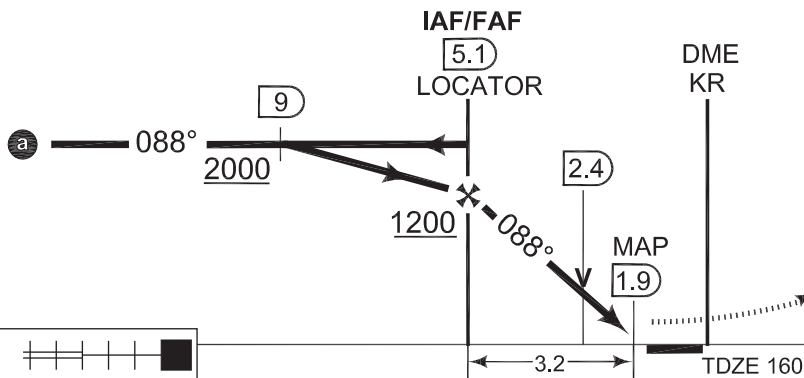


**MSA KP 25 NM**



**SAFE ALT 100NM 2400**

**TA 3000**



**MISSED APPROACH**  
Climb to 2000 ft on 088°  
to L KA and hold.

CAT I

CATEGORY	A	B	C	D
S-L/DME	<b>480</b> -800 320 (400-0.8/1.6)		<b>480</b> -1200 320 (400-1.2/1.6)	
CIRCLING	<b>680</b> -1600 510 (600-1.6)		<b>680</b> -2400 510 (600-2.4)	<b>720</b> -3200 550 (600-3.2)

CHANGES: AD ELEV

**L/DME RWY 09R**

56°17.85'N  
009°07.48'E

**KARUP (EKKA)**

TACDEN FLIGHT INFORMATION 08 MAR 2012