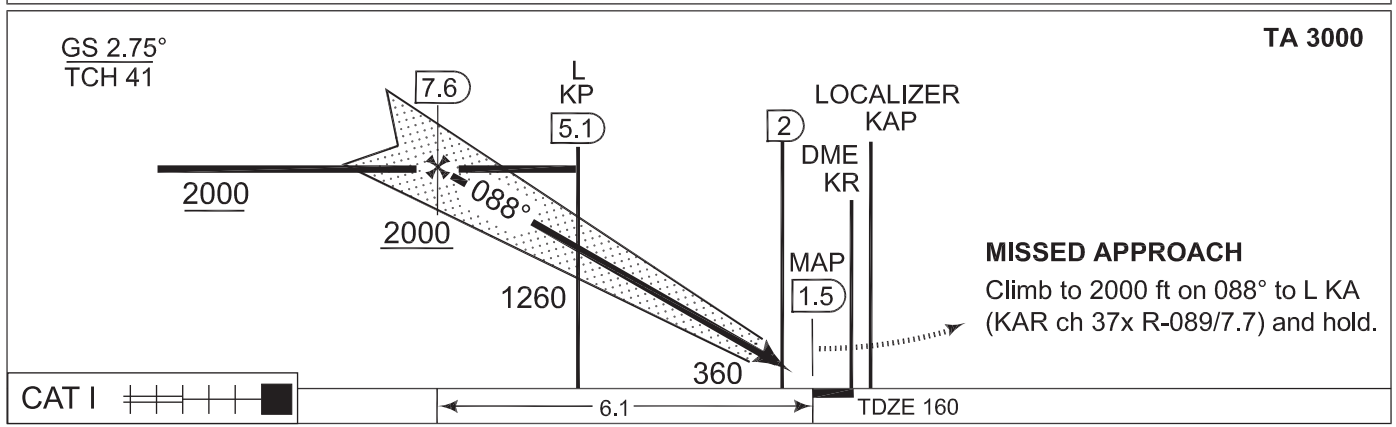
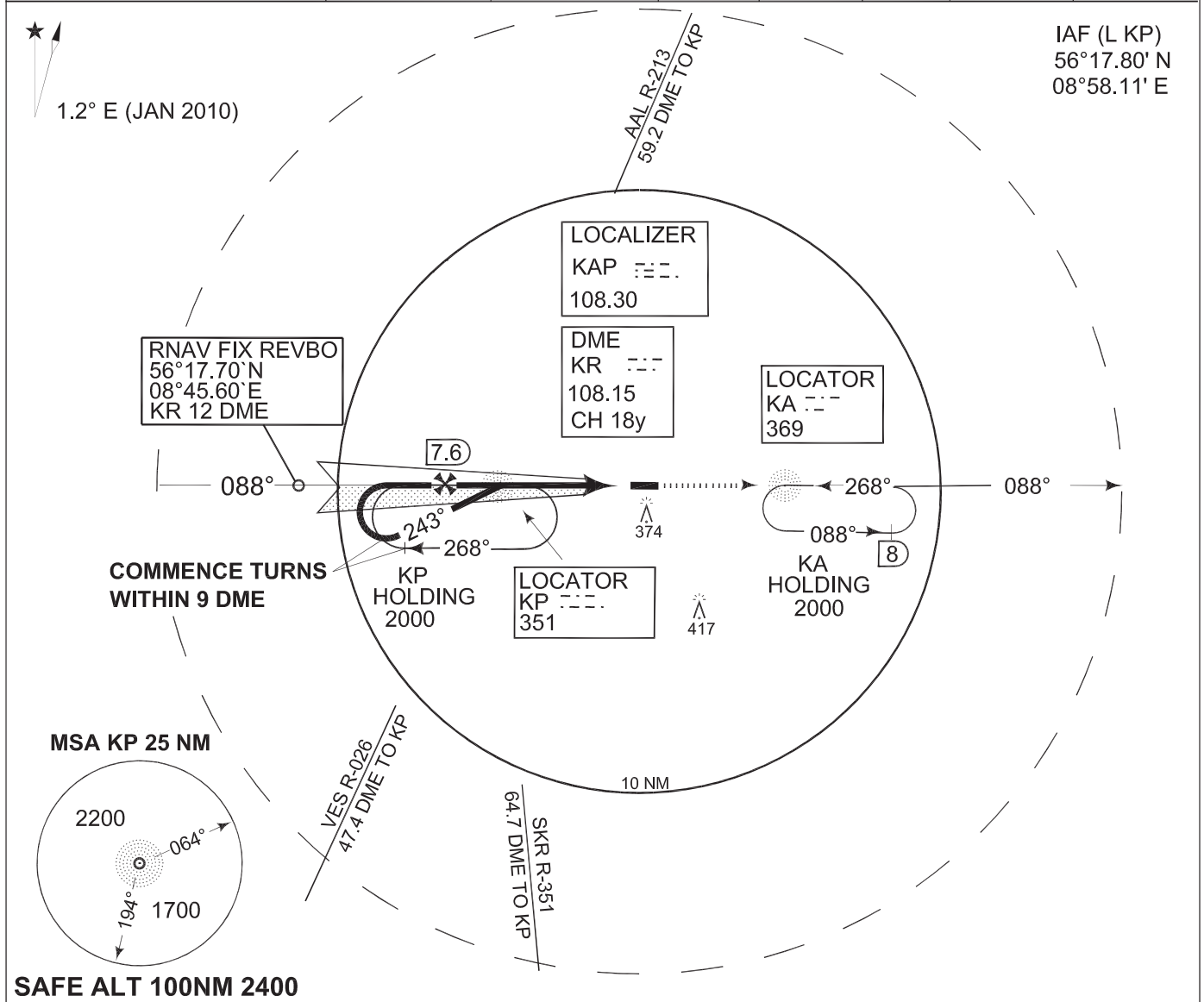


TERPS INSTRUMENT APPROACH CHART

AD ELEV 171

ILS/DME RWY 09R KARUP (EKKA)

COPENHAGEN CONTROL 259.375 124.550		KARUP ATIS 120.575		KARUP APPROACH 292.750 120.425			KARUP TOWER 241.650 119.575	
LOCALIZER KAP 108.300	DME KR CH18y	APP COURSE 088°	GS INTCP ALT 2000 FT	GS 2.75°	DA 360	TDZE 160	ALS length 900 M	LDA 9607 FT



CATEGORY	A	B	C	D	E
S-ILS 09R	360 -800 200 (200-0.8/1.2)				
S-Localizer 09R	420 -800 260 (300-0.8/1.6)	420 -1200 260 (300-1.2/1.6)			
CIRCLING	680 -1600 510 (600-1.6)	680 -2400 510 (600-2.4)	720 -3200 550 (600-3.2)	780 -3600 610 (700-3.6)	

ILS/DME RWY 09R

56°17.85'N
009°07.48'E

KARUP (EKKA)

CHANGES: AD ELEV

TACDEN FLIGHT INFORMATION 08 MAR 2012