

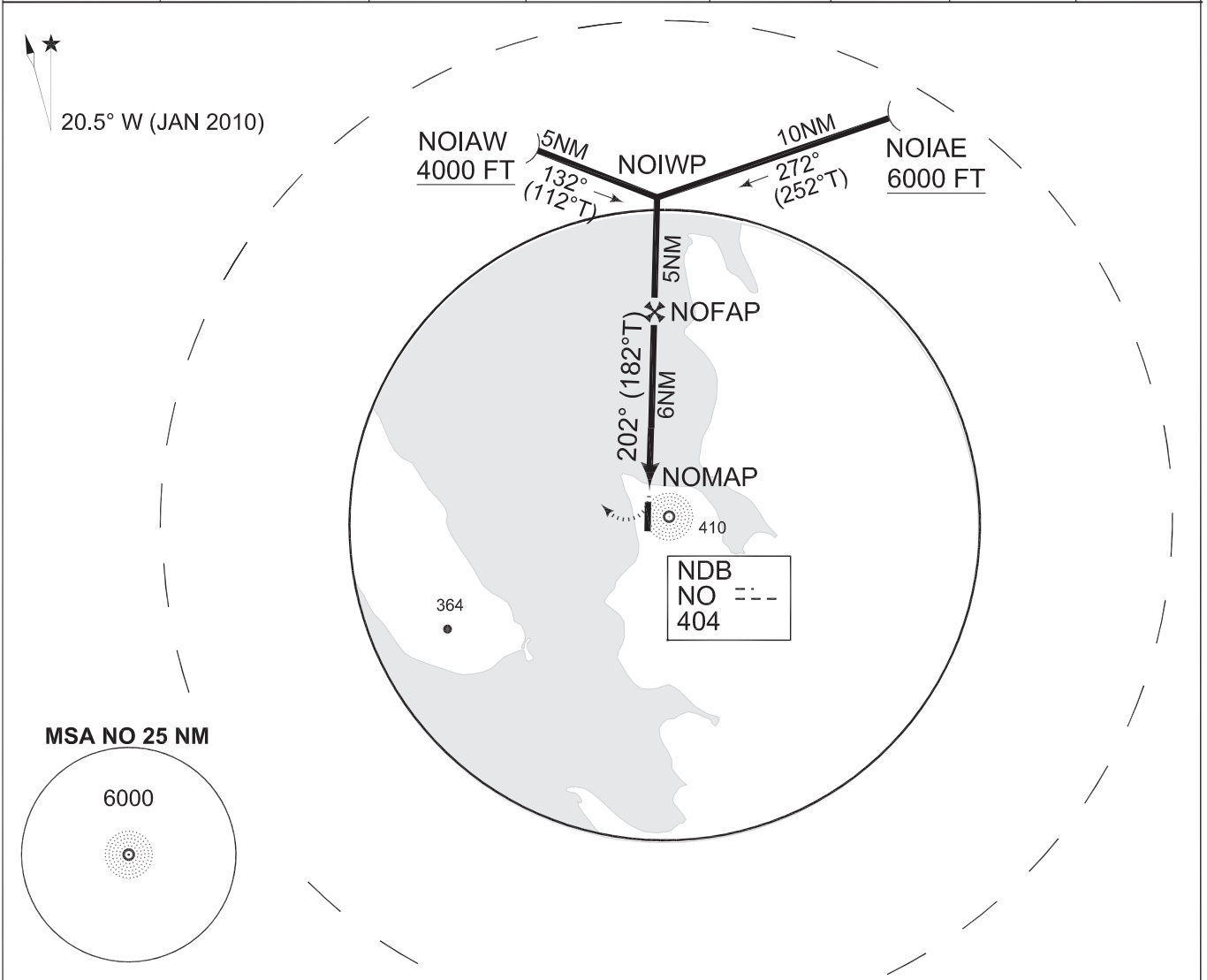
**TERPS  
INSTRUMENT APPROACH CHART**

**ELEV 80 FT**

**GPS-RNAV RWY 21  
STATION NORD, GREENLAND (BGNO)**

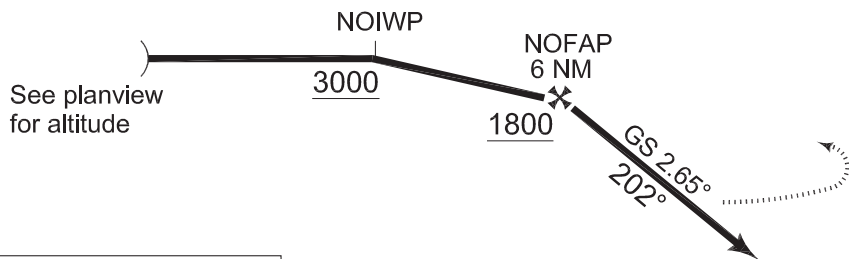
STATION NORD RADIO  
118.100 267.300

NDB NO 404	APP COURSE 202°	FAP ALT 1800	DESCENT GR 283 FT/NM	MDA <b>660</b>	THR ELEV 61	ALS length 350 M	LDA 5906 FT
---------------	--------------------	-----------------	-------------------------	-------------------	----------------	---------------------	----------------



**MISSED APPROACH**

Right turn climbing to 4000FT  
inbound NOIAW for new procedure.



TA 5000

**ALTITUDE CORRECTION CHART  
SURFACE TEMP**

TEMP.C	MDA	MSA
0	700	6400
-10	740	6600
-20	760	6900
-30	780	7100
-40	820	7400
-50	840	7600

SRC

THR ELEV 61

CATEGORY

C

S-GPS RWY 21

**660** -2400 599 (600-2.4)

CIRCLING

**660** -4000 599 (600-4.0)

**CIRCLING IS NOT AUTHORIZED IN SECTOR EAST OF RWY 21/03**

CHANGES: LDA

**GPS-RNAV RWY 21**

81°36.54'N  
016°40.63'W

**STATION NORD, GREENLAND (BGNO)**

TACDEN FLIGHT INFORMATION 08 MAR 2012