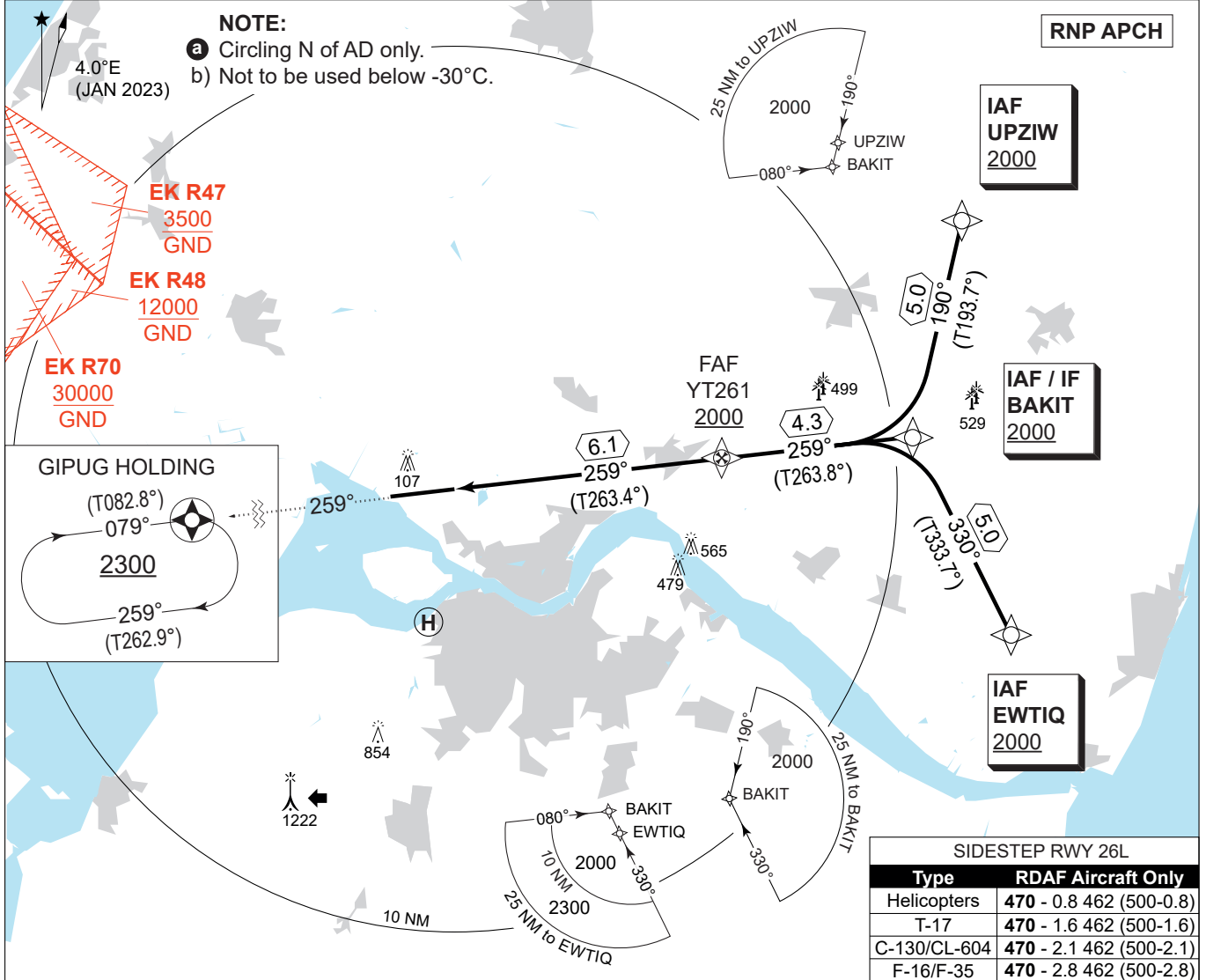


**MIPS**  
**INSTRUMENT APPROACH CHART**

AD ELEV 8

**RNP RWY 26R**  
**AALBORG (EKYT)**

COPENHAGEN CONTROL 242.650 124.555		AALBORG ATIS 120.480		AALBORG APPROACH 362.450 123.980		AALBORG TOWER 353.525 118.305	
EGNOS CHANNEL 95396 / E26A	APP COURSE 259°	GS INCPT ALT 2000 FT	GS 3.00°	DA <b>See CAT</b>	THR ELEV 8	ALS LENGTH 900 M	LDA 8694 FT

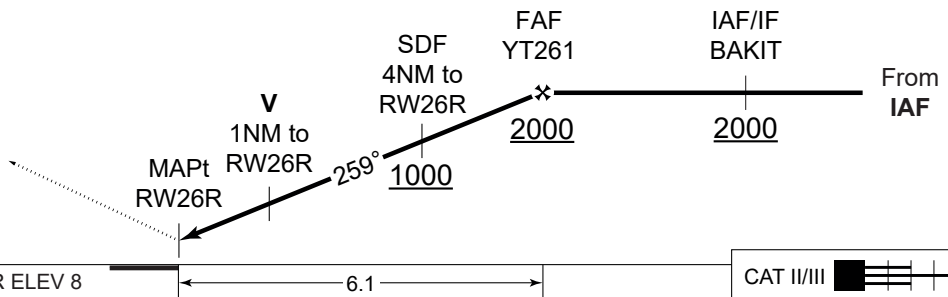


**CDFA: 3.00° / 5.24%**

DIST THR	2	3	4	5	6
ALT	700	1020	1330	1650	1970

**TA 3000**  
GS 3.00°  
RDH 51

**MISSED APPROACH:**  
Climb straight ahead to GIPUG and join the holding at 2300 FT.



CHANGES: NEW PROCEDURE.

CATEGORY	A	B	C	D	E
LPV	<b>258</b> - 600 250 (300-0.8/1.3)				
LNAV/VNAV	<b>258</b> - 600 250 (300-0.8/1.3)	<b>268</b> - 600 260 (300-0.8/1.3)	<b>278</b> - 600 270 (300-0.8/1.3)	<b>288</b> - 600 280 (300-0.8/1.3)	
LNAV	<b>420</b> - 1200 412 (500-1.2/1.9)				
CIRCLING a	<b>510</b> - 1.5 502 (600-1.5)	<b>510</b> - 1.6 502 (600-1.6)	<b>690</b> - 2.4 682 (700-2.4)	<b>750</b> - 3.6 742 (800-3.6)	<b>840</b> - 3.6 832 (900-3.6)

**RNP RWY 26R**

57°05.57'N  
009°50.95'E

**AALBORG (EKYT)**

AIR COMMAND DENMARK - MIL AIM 03 OCT 2024