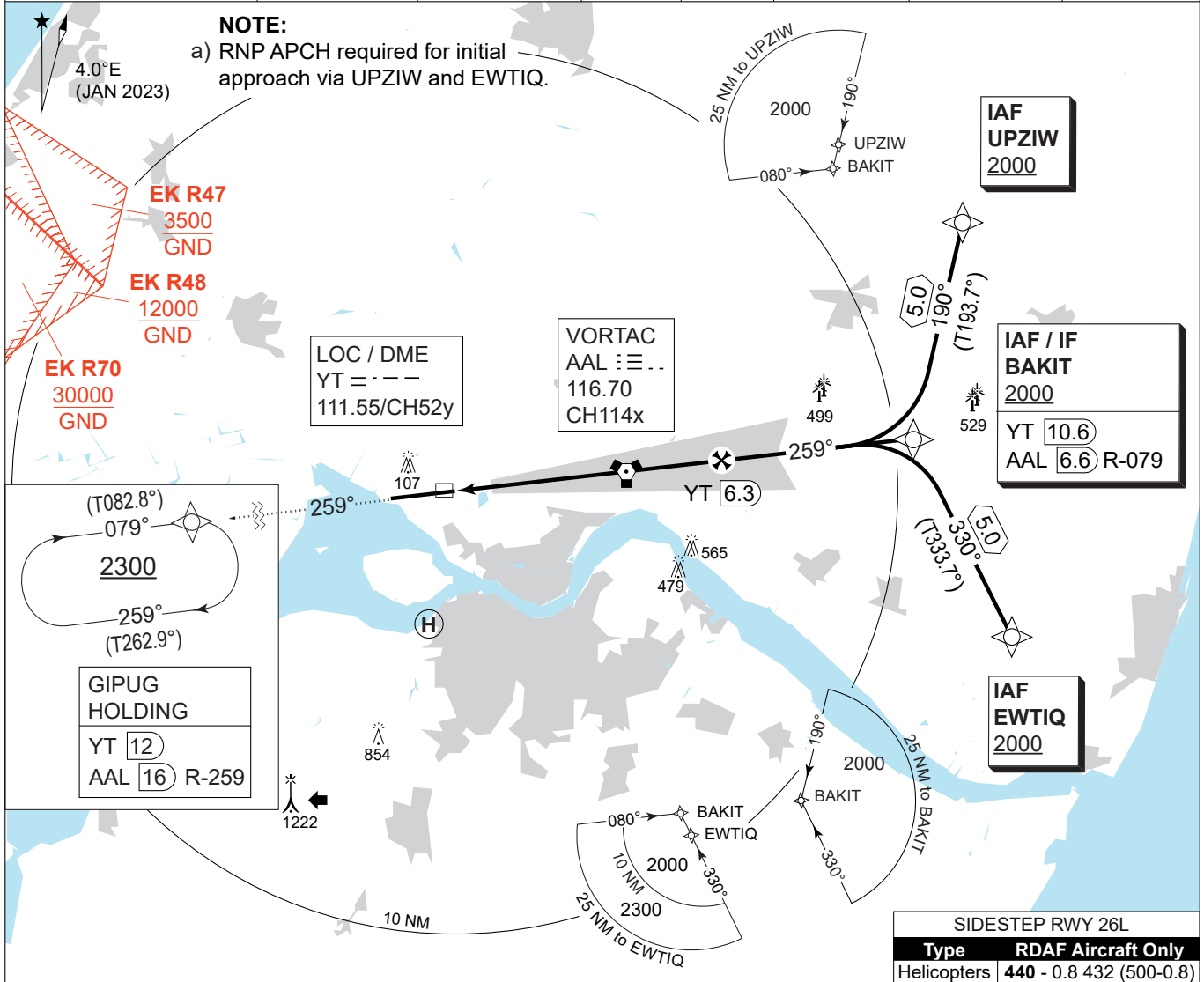


**MIPS**  
**INSTRUMENT APPROACH CHART**

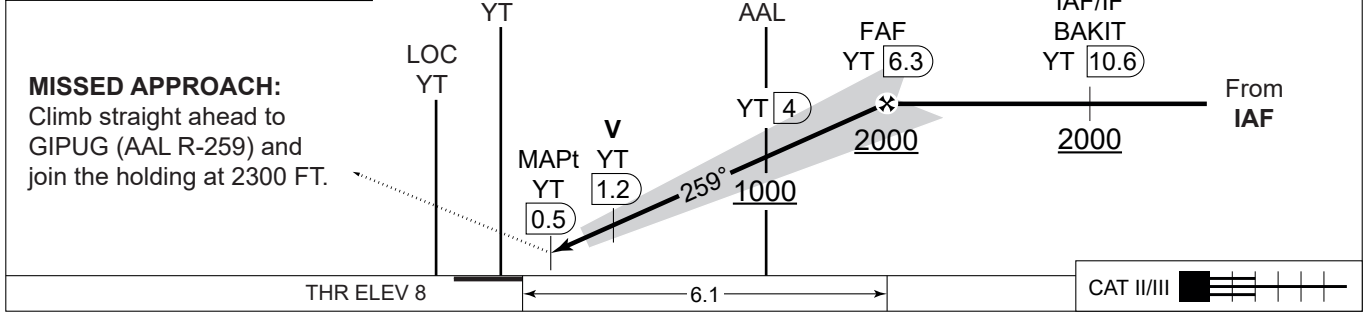
**COPTER ILS or LOC RWY 26R**  
**AALBORG (EKYT)**

AD ELEV 8

COPENHAGEN CONTROL 242.650 124.555		AALBORG ATIS 120.480	AALBORG APPROACH 362.450 123.980		AALBORG TOWER 353.525 118.305	
LOC/DME YT 111.55/CH 52y	APP COURSE 259°	GS INCP T ALT 2000 FT	GS 3.00°	DA <b>210</b>	THR ELEV 8	ALS LENGTH 900 M
		LDA 8694 FT				



<b>CDFA: 3.00° / 5.24%</b>						<b>TA 3000</b> GS 3.00° RDH 51
DME YT	2	3	4	5	6	
DIST THR	1.8	2.8	3.8	4.8	5.8	
ALT	640	960	1280	1600	1920	



CHANGES: NEW PROCEDURE.

<b>MIPS</b>	CATEGORY	H
	H-CAT I	<b>208</b> - 400 200 (200-0.4/0.8)
	H-CAT II	<b>RA 101</b> (DA 108) - 350 100
	H-LOC 26R	<b>390</b> - 400 382 (400-0.4/0.8)

AIR COMMAND DENMARK - MIL AIM 03 OCT 2024