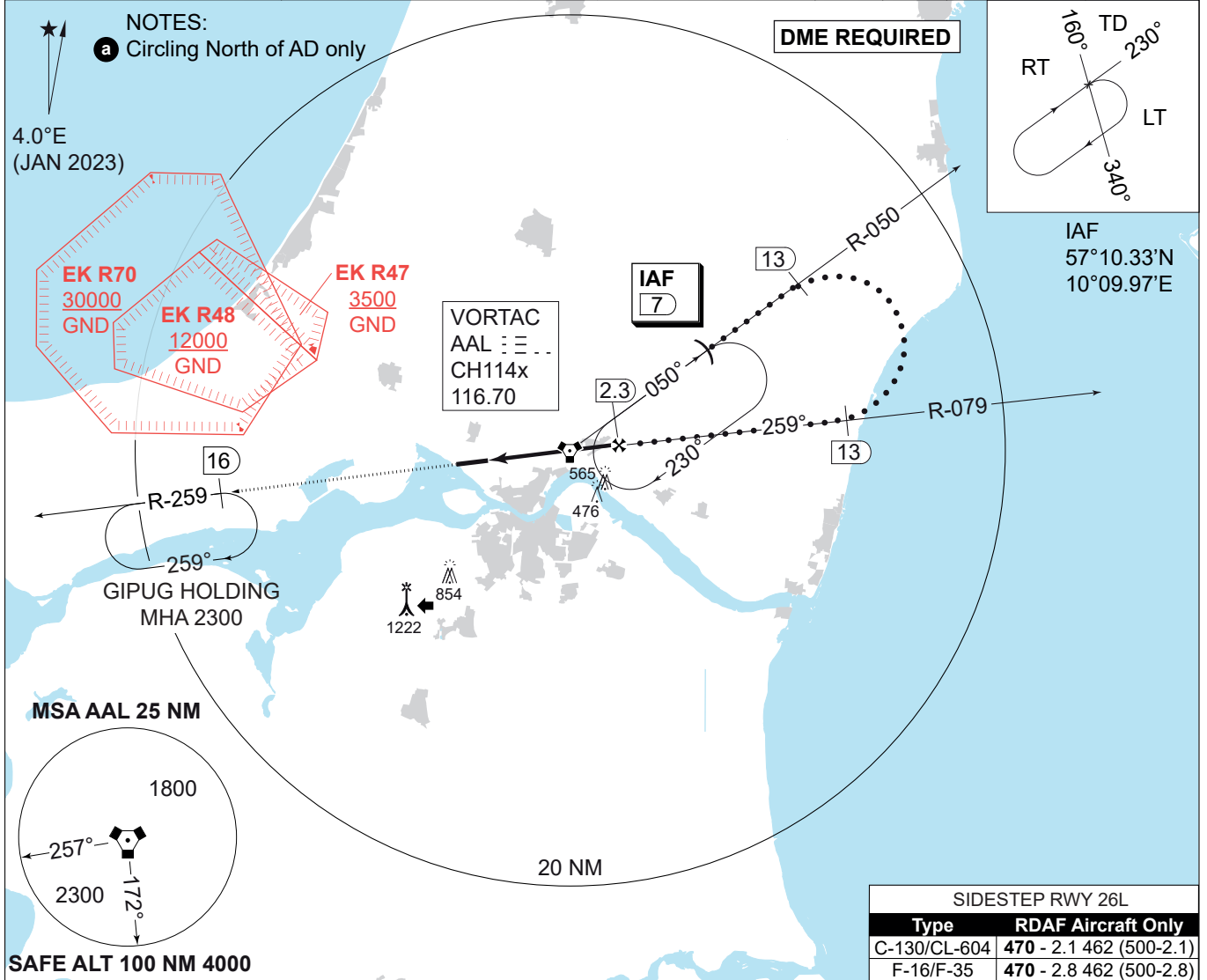


MIPS
INSTRUMENT APPROACH CHART

HPMA VORTAC RWY 26R
AALBORG (EKYT)

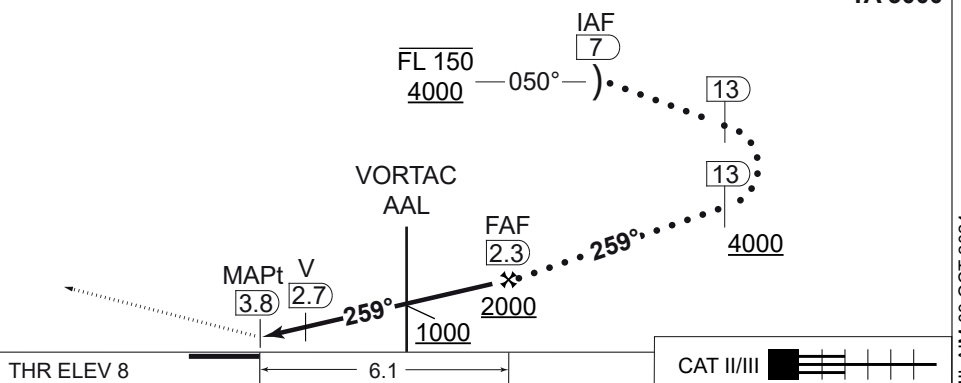
AD ELEV 8

COPENHAGEN CONTROL 242.650 124.555		AALBORG ATIS 120.480		AALBORG APPROACH 362.450 123.980		AALBORG TOWER 353.525 118.305	
VORTAC AAL 116.70/CH 114X	APP COURSE 259°	FAF ALT 2000 FT	DESCENT GR. 5.24% (318 FT/NM)	MDA 420	THR 8	ALS LENGTH 900 M	LDA 8694 FT



CDFA: 3.00° / 5.24%					
DME AAL	2	1	0	1	2
DIST THR	1.8	2.8	3.8	4.8	5.8
ALT	640	960	1280	1600	1920

MISSED APPROACH
Climb on AAL R-259 to DME 16. Join GIPUG holding at 2300 FT.



CHANGES: PROCEDURE CHANGED FROM TERPS TO HPMA CRITERIA

AIR COMMAND DENMARK - MIL-AIM 03 OCT 2024

CATEGORY	HPMA
S-VORTAC 26R	420 - 1200 412 (500-1.2/1.9)
CIRCLING a	560 - 3.2 552 (600-3.2)

HPMA VORTAC RWY 26R

57°05.57'N
009°50.95'E

AALBORG (EKYT)