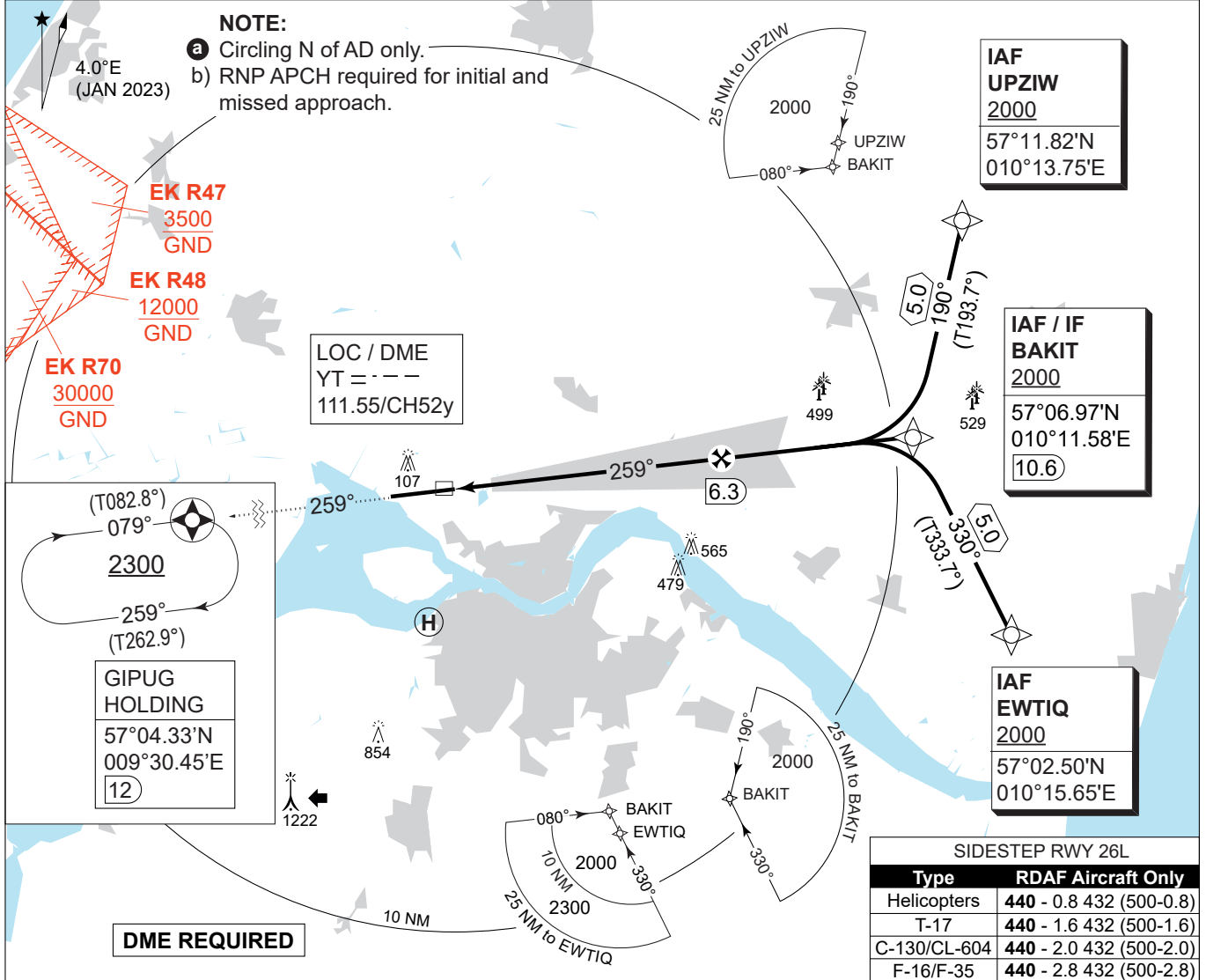


MIPS
INSTRUMENT APPROACH CHART

AD ELEV 8

ILS or LOC RWY 26R
AALBORG (EKYT)

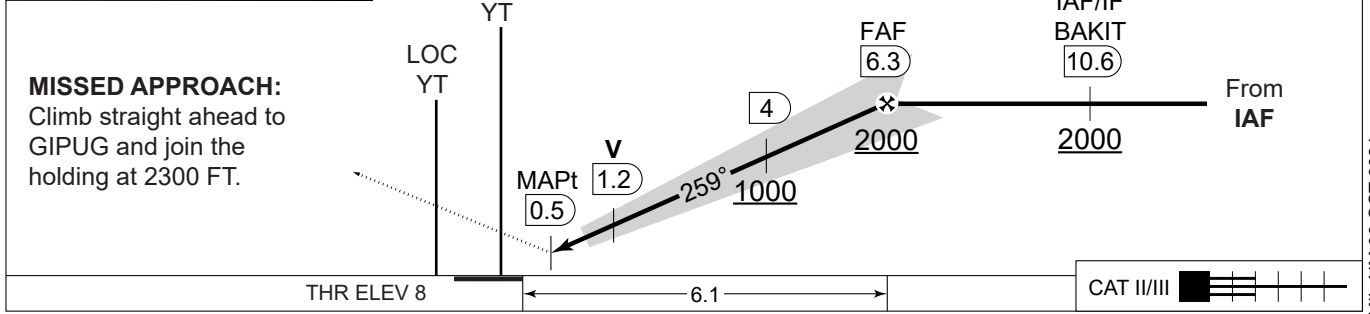
COPENHAGEN CONTROL 242.650 124.555		AALBORG ATIS 120.480	AALBORG APPROACH 362.450 123.980			AALBORG TOWER 353.525 118.305	
LOC/DME YT 111.55/CH 52y	APP COURSE 259°	GS INCTP ALT 2000 FT	GS 3.00°	DA 208	THR ELEV 8	ALS LENGTH 900 M	LDA 8694 FT



CDFA: 3.00° / 5.24%

DME YT	2	3	4	5	6
DIST THR	1.8	2.8	3.8	4.8	5.8
ALT	640	960	1280	1600	1920

TA 3000
GS 3.00°
RDH 51



CATEGORY	A	B	C	D	E
S-CAT I	208 - 550 200 (200-0.8/1.2)				
S-CAT II	RA 101 (DA 108) - 350 100				N/A
S-LOC 26R	390 - 1100 382 (400-1.1/1.8)				
CIRCLING a	510 -1.5 502 (600-1.5)	510 -1.6 502 (600-1.6)	690 -2.4 682 (700-2.4)	750 -3.6 742 (800-3.6)	840 -3.6 832 (900-3.6)

ILS or LOC RWY 26R 57°05.57'N **AALBORG (EKYT)**
009°50.95'E

CHANGES: NEW PROCEDURE.

AIR COMMAND DENMARK - MIL AIM 03 OCT 2024