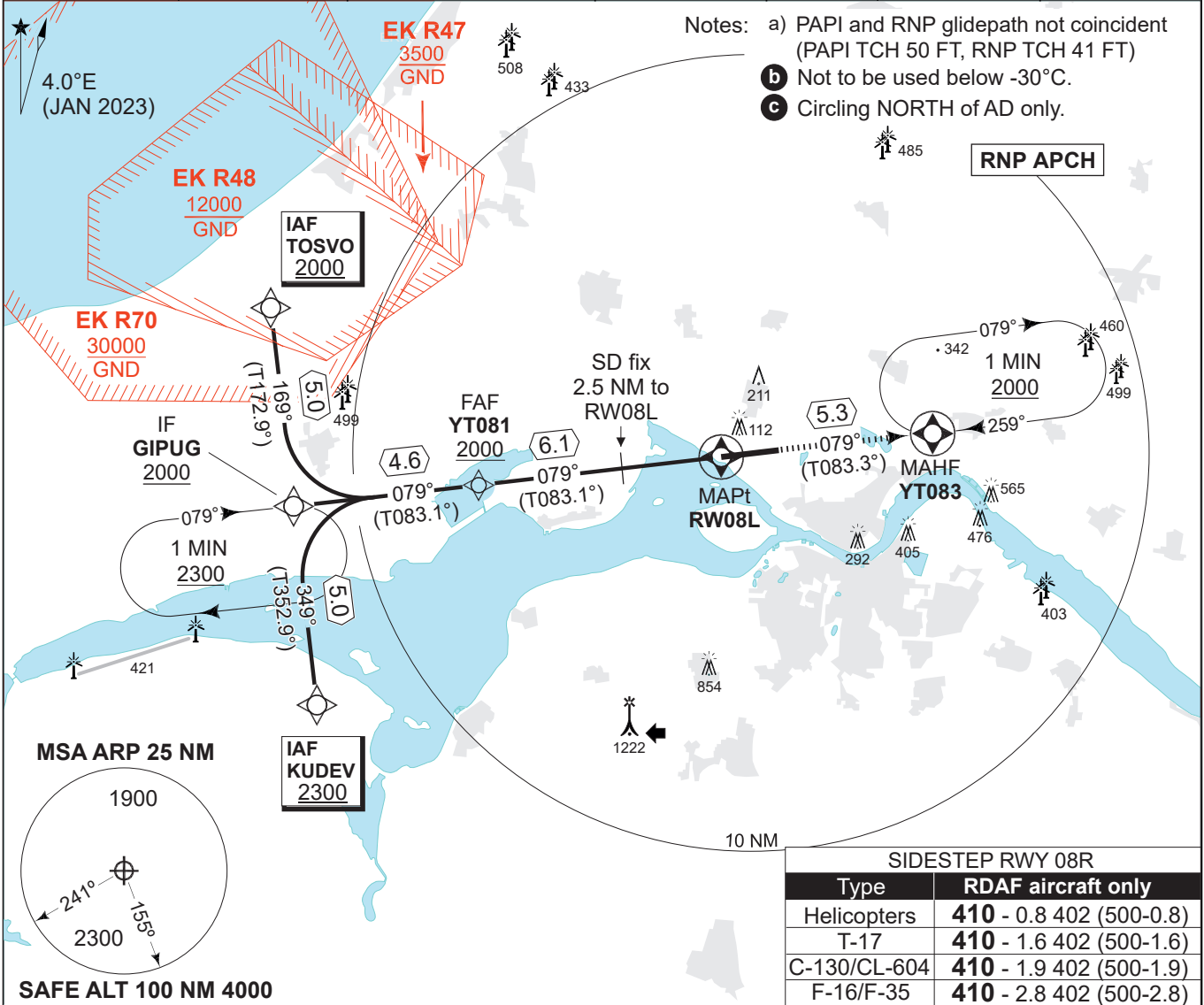


**MIPS INSTRUMENT APPROACH CHART**

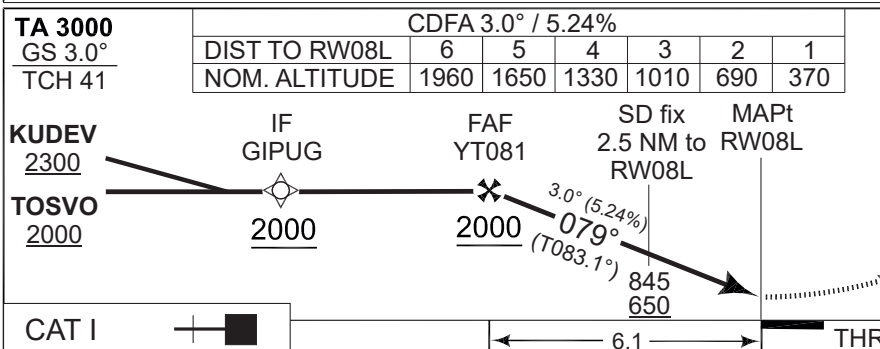
AD ELEV 8

**RNP RWY 08L AALBORG (EKYT)**

COPENHAGEN CONTROL 242.650 124.555		AALBORG ATIS 120.480		AALBORG APPROACH 362.450 123.980		AALBORG TOWER 353.525 118.305	
APP COURSE 079°	FAF ALT 2000 FT	Descent GR 3.0° (5.24%)		MINIMA <b>See CAT</b>	THR 6	ALS length 470 M	LDA 8694 FT



SIDESTEP RWY 08R	
Type	RDAF aircraft only
Helicopters	410 - 0.8 402 (500-0.8)
T-17	410 - 1.6 402 (500-1.6)
C-130/CL-604	410 - 1.9 402 (500-1.9)
F-16/F-35	410 - 2.8 402 (500-2.8)



CATEGORY	CDFA 3.0° / 5.24%				
	A	B	C	D	E
LNAV/VNAV (DA) <b>b</b>	256 -800 250 (300-0.8/1.3)			272 - 900 266 (300-0.9/1.3)	290 - 900 284 (300-0.9/1.4)
LNAV (MDA)	310 -1000 302 (400-1.0/1.4)		330 -1100 322 (400-1.1/1.5)	350 -1200 342 (400-1.2/1.6)	360 -1200 352 (400-1.2/1.6)
CIRCLING <b>c</b>	510 -1.5 502 (600-1.5)	510 -1.6 502 (600-1.6)	690 -2.4 682 (700-2.4)	750 -3.6 742 (800-3.6)	840 -3.6 832 (900-3.6)

**RNP RWY 08L** 57°05.57'N 009°50.95'E **AALBORG (EKYT)**

CHANGES: EDITORIAL and AD ELEV, THR ELEV and ALL APPROACH TYPES CAT MINIMA CHG.

AIR COMMAND DENMARK - MIL AIM 03 OCT 2024