

MIPS
INSTRUMENT APPROACH CHART

HPMA TACAN RWY 08L
AALBORG (EKYT)

AD ELEV 8

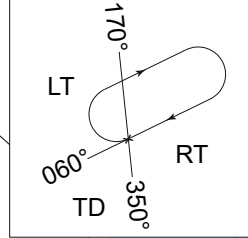
COPENHAGEN CONTROL 242.650 124.555		AALBORG ATIS 120.480		AALBORG APPROACH 362.450 123.980		AALBORG TOWER 353.525 118.305		
VORTAC AAL CH 114X/116.700	APP COURSE 079°	FAF ALT 2000 FT	DESCENT GR. 5.24% (318 FT/NM)	MDA 340	THR 6	ALS LENGTH 470 M	LDA 8694 FT	

NOTES:

a Circling North of AD only

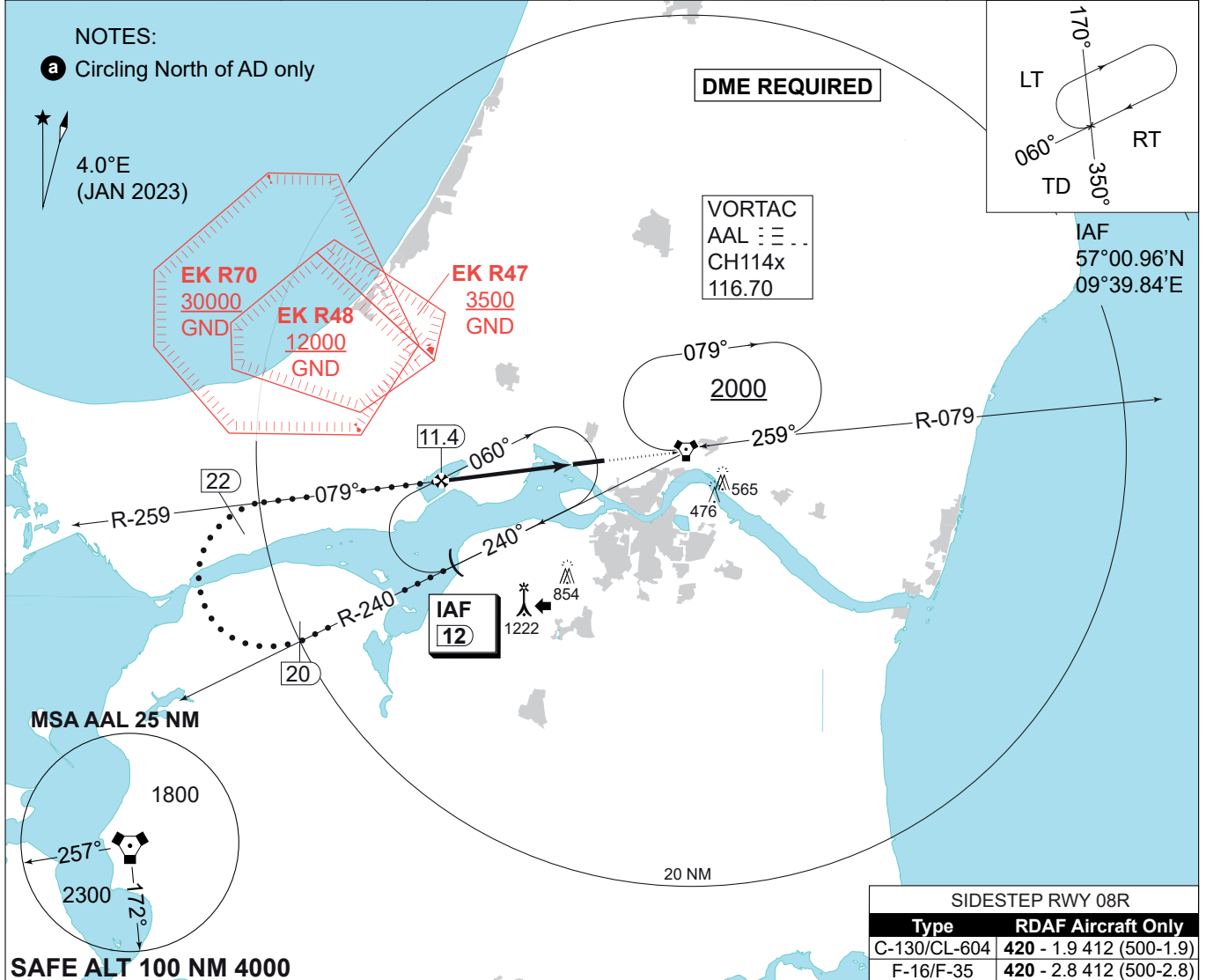
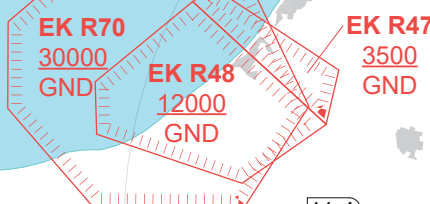
4.0°E
(JAN 2023)

DME REQUIRED



VORTAC
AAL CH 114x
116.70

IAF
57°00.96'N
09°39.84'E

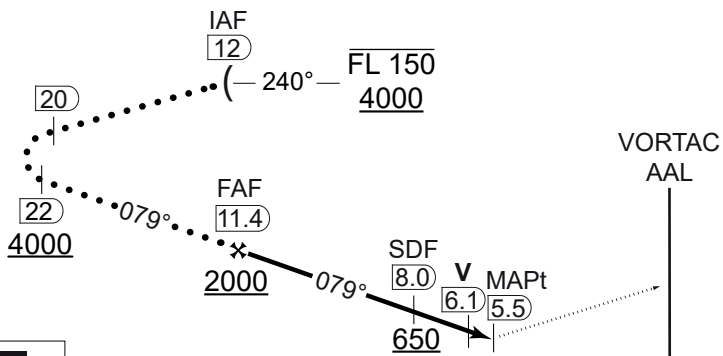


SIDESTEP RWY 08R	
Type	RDAF Aircraft Only
C-130/CL-604	420 - 1.9 412 (500-1.9)
F-16/F-35	420 - 2.8 412 (500-2.8)

SAFE ALT 100 NM 4000

TA 3000

CDFA: 3.00° / 5.24%					
DME AAL	11	10	9	8	7
DIST THR	5.7	4.7	3.7	2.7	1.7
ALT	1890	1570	1250	940	620



MISSED APPROACH
Climb on TACAN AAL R-259 to 2000 ft inbound AAL and hold.

CAT I 6.1 THR ELEV 6

CATEGORY	HPMA
S-TACAN 08L	340 - 1100 332 (400-1.1/1.5)
CIRCLING a	560 - 3.2 552 (600-3.2)

HPMA TACAN RWY 08L

57°05.57'N
009°50.95'E

AALBORG (EKYT)

CHANGES: PROCEDURE CHANGED FROM TERPS TO HPMA CRITERIA

AIR COMMAND DENMARK - MIL-AIM 03 OCT 2024