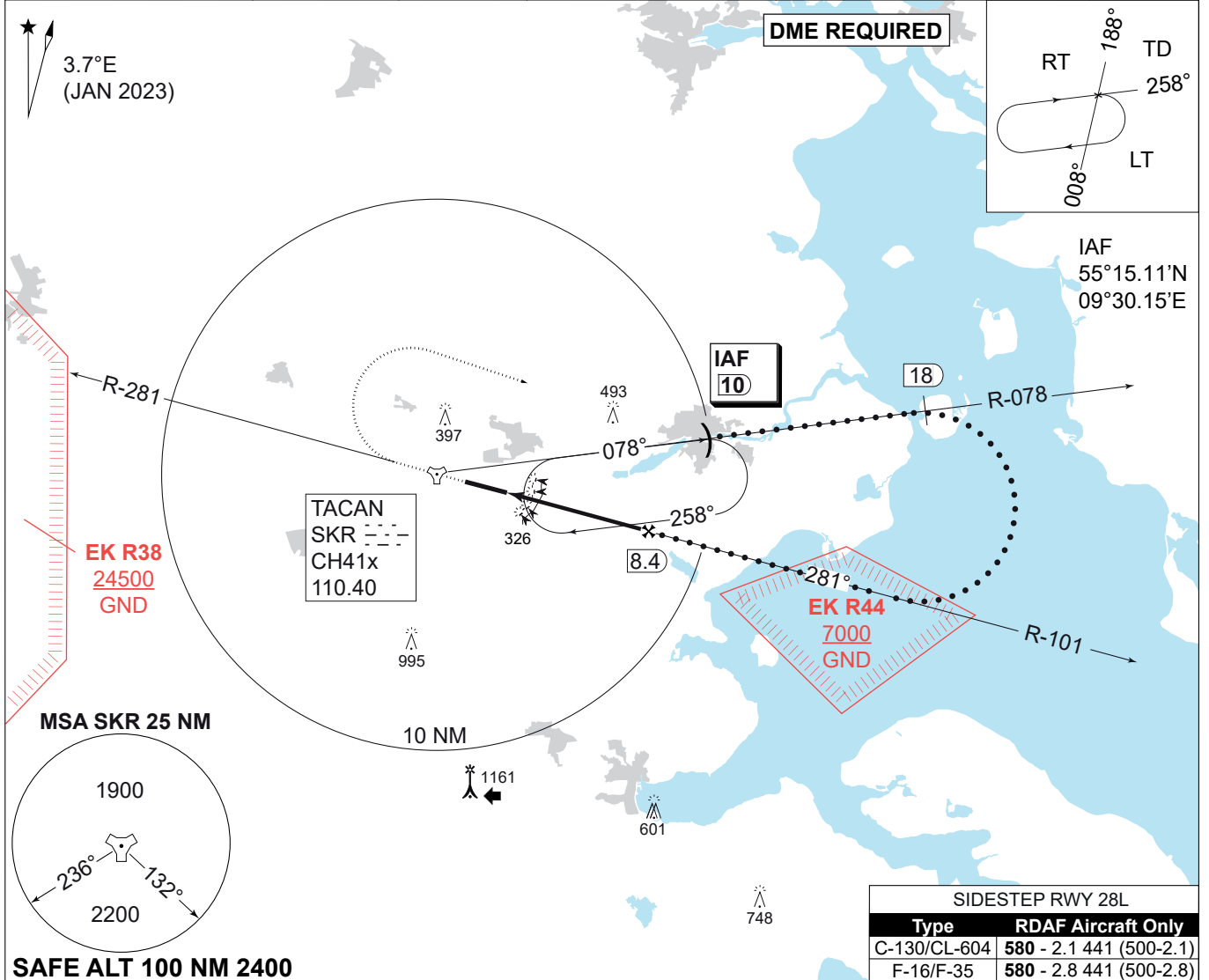


MIPS
INSTRUMENT APPROACH CHART

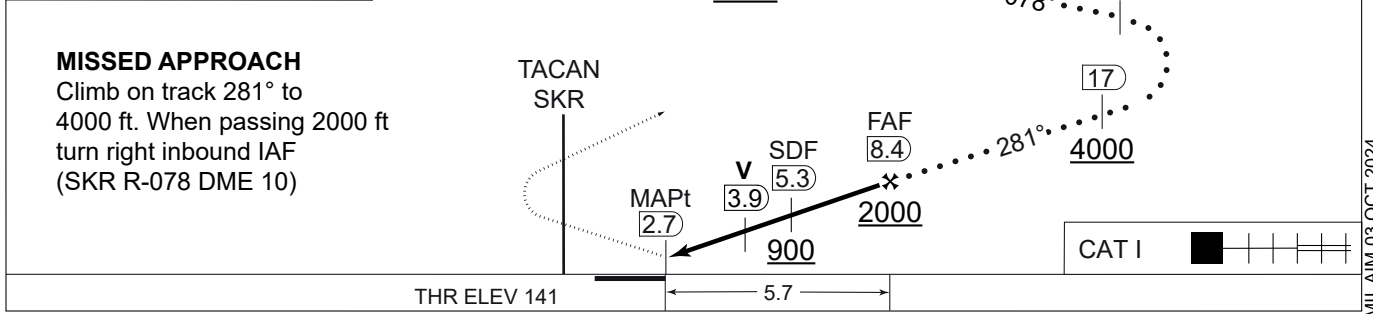
HPMA TACAN RWY 28R
SKRYDSTRUP (EKSP)

AD ELEV 141

COPENHAGEN CONTROL 360.100 133.155		SKRYDSTRUP ATIS 133.905		SKRYDSTRUP APPROACH 315.100 124.105		SKRYDSTRUP TOWER 286.375 118.280		
TACAN SKR110.40/CH 41x	APP COURSE 281°	FAF ALT 2000 FT	DESCENT GR. 5.24% (318 FT/NM)		MDA 580	THR ELEV 141	ALS LENGTH 900 M	LDA 9863 FT



CDFA: 3.00° / 5.24%					
DME SKR	4	5	6	7	8
DIST THR	1.3	2.3	3.3	4.3	5.3
ALT	610	930	1250	1570	1890



CATEGORY	HPMA
S-TACAN 28R	580 - 1300 439 (500-1.3/2.0)
CIRCLING	700 - 3.2 559 (600-3.2)

CHANGES: PROCEDURE CHANGED TO HPMA CRITERIA.

AIR COMMAND DENMARK - MIL AIM 03 OCT 2024