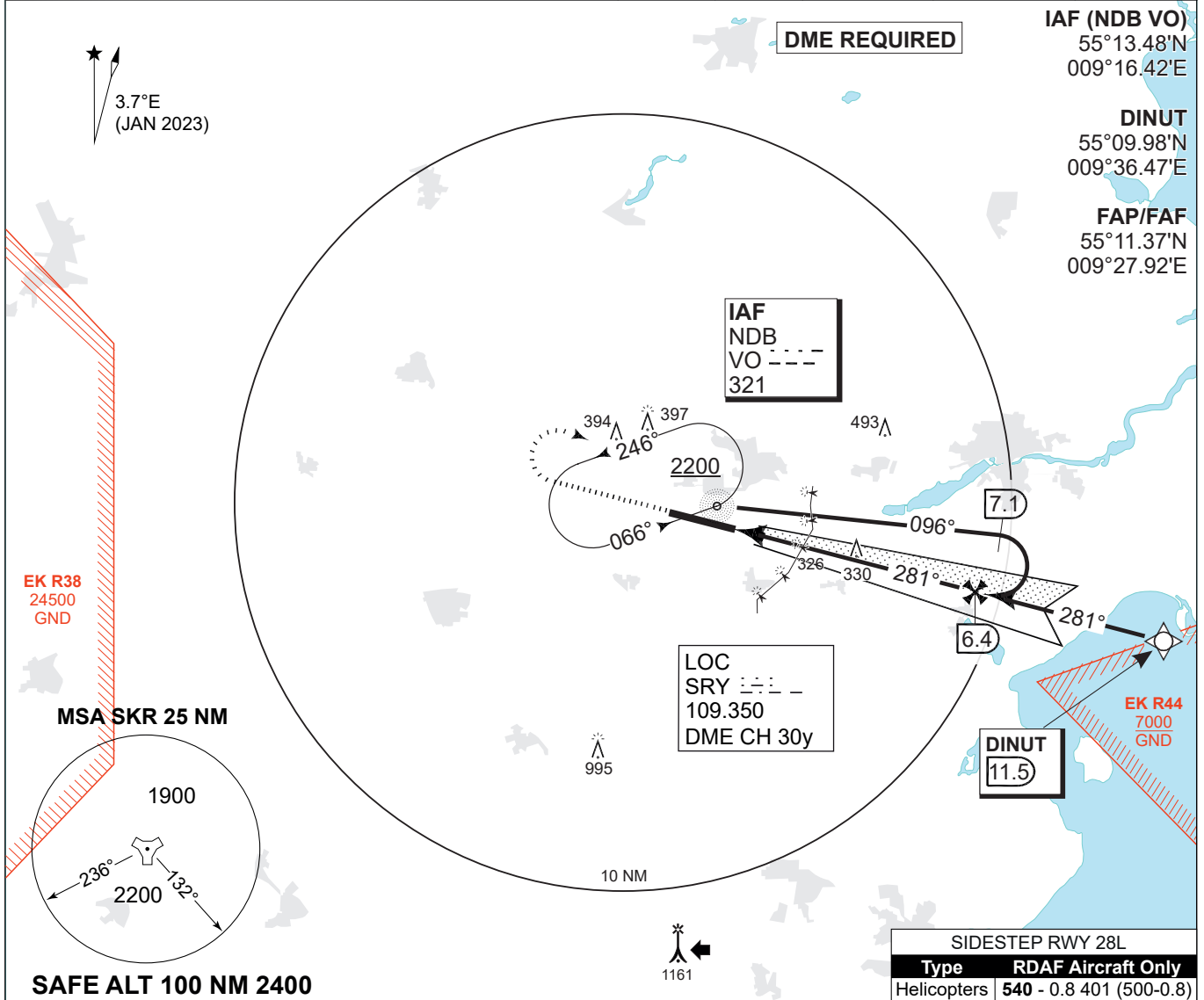


MIPS INSTRUMENT APPROACH CHART

COPTER ILS or LOC RWY 28R SKRYDSTRUP (EKSP)

AD ELEV 141

COPENHAGEN CONTROL 360.100 133.155		SKRYDSTRUP ATIS 133.905	SKRYDSTRUP APPROACH 315.100 124.105		SKRYDSTRUP TOWER 286.375 118.280		
LOC / DME SRY 109.35/CH 30y	APP COURSE 281°	GS INTCP ALT 2200 FT	GS 3.0°	DA 341	THR ELEV 141	ALS LENGTH 900 M	LDA 9863 FT



IAF (NDB VO)
55°13.48'N
009°16.42'E

DINUT
55°09.98'N
009°36.47'E

FAP/FAF
55°11.37'N
009°27.92'E

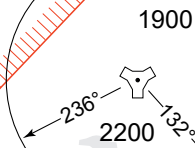
DME REQUIRED

IAF NDB VO
VO ---
321

LOC SRY
109.350
DME CH 30y

EK R38
24500
GND

MSA SKR 25 NM



SAFE ALT 100 NM 2400

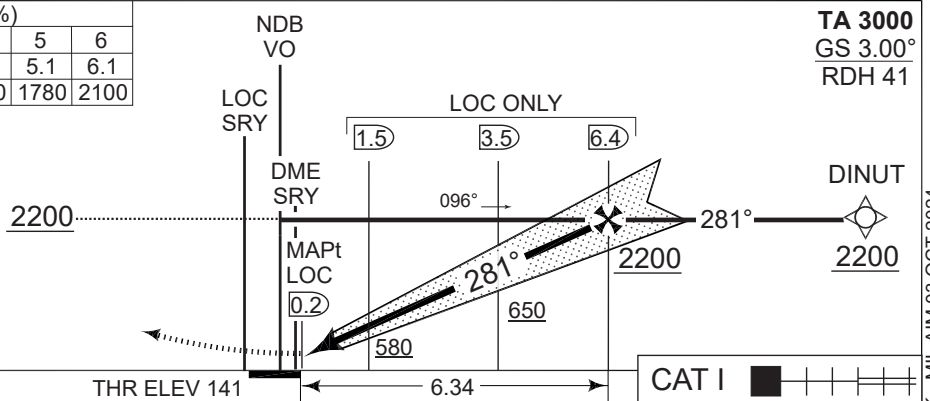
SIDESTEP RWY 28L	
Type	RDAC Aircraft Only
Helicopters	540 - 0.8 401 (500-0.8)

LOC ONLY (CDFA 3.0° / 5.24%)						
DIST TO THR (NM)	1	2	3	4	5	6
DME SRY (NM)	1.1	2.1	3.1	4.1	5.1	6.1
ALT	500	820	1140	1460	1780	2100

TA 3000
GS 3.00°
RDH 41

MISSED APPROACH

Climb on RWY HDG to 2200 FT. Turn right to join holding at NDB VO.



CHANGES: NEW PROCEDURE.

CATEGORY	H	
MIPS		
H-ILS/DME 28R	341	-400 200 (200-0.4/0.8)
H-LOC/DME 28R	470	-400 329 (400-0.4/0.8)

COPTER ILS or LOC RWY 28R

55°13.53'N
009°15.84'E

SKRYDSTRUP (EKSP)

AIR COMMAND DENMARK - MIL AIM 03 OCT 2024