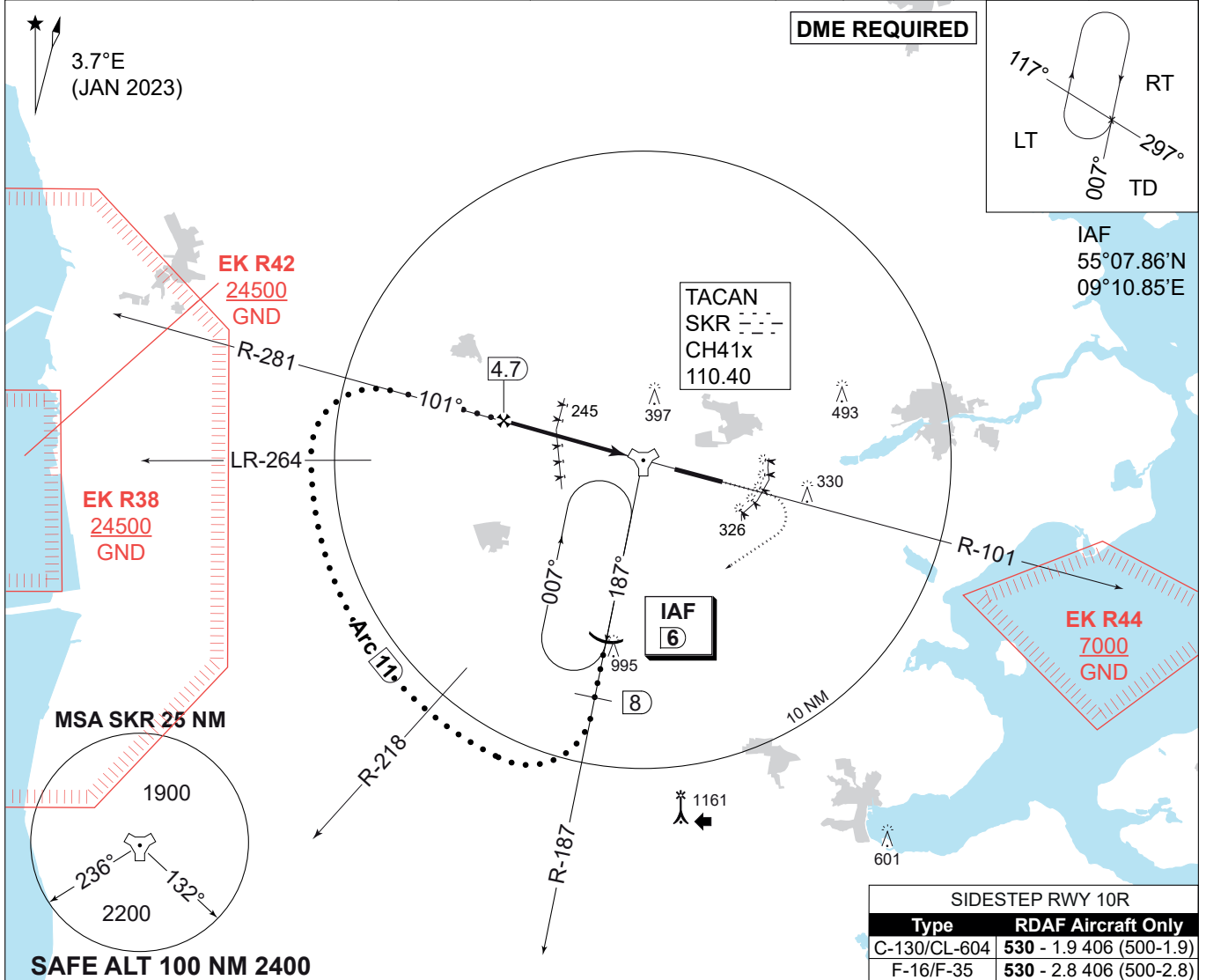


MIPS
INSTRUMENT APPROACH CHART

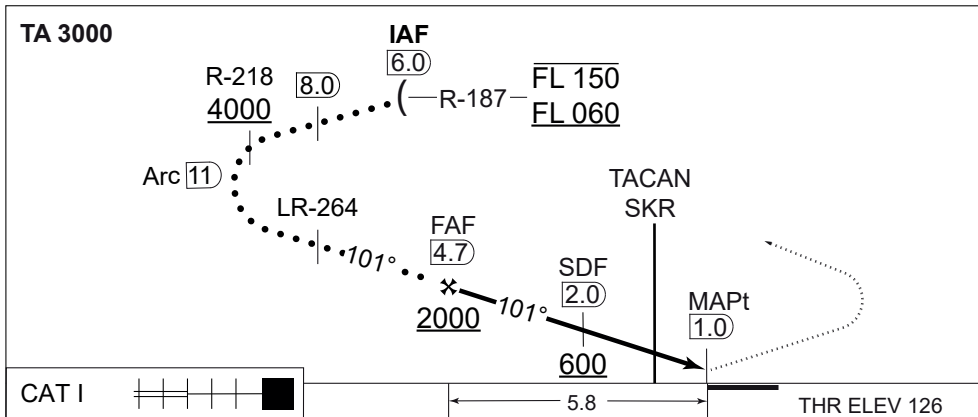
HPMA TACAN RWY 10L
SKRYDSTRUP (EKSP)

AD ELEV 141

COPENHAGEN CONTROL 360.100 133.155		SKRYDSTRUP ATIS 133.905	SKRYDSTRUP APPROACH 315.100 124.105		SKRYDSTRUP TOWER 286.375 118.280		
TACAN SKR110.40/CH 41x	APP COURSE 101°	FAF ALT 2000 FT	DESCENT GR. 5.24% (318 FT/NM)	MDA 460	THR ELEV 126	ALS LENGTH 900 M	LDA 9863 FT



SIDESTEP RWY 10R	
Type	RDAF Aircraft Only
C-130/CL-604	530 - 1.9 406 (500-1.9)
F-16/F-35	530 - 2.8 406 (500-2.8)



CDFA: 3.00° / 5.24%					
DME SKR	4	3	2	1	0
DIST THR	5.1	4.1	3.1	2.1	1.1
ALT	1790	1470	1150	830	520

MISSED APPROACH
Climb on SKR R-101 to FL 60. When passing 2000 ft turn right inbound IAF (SKR R-187 DME 6)

CATEGORY	HPMA
S-TACAN 10L	460 - 800 334 (400-0.8/1.5)
CIRCLING	700 - 3.2 559 (600-3.2)

HPMA TACAN RWY 10L 55°13.53'N 009°15.84'E **SKRYDSTRUP (EKSP)**

CHANGES: PROCEDURE CHANGED TO HPMA CRITERIA.

AIR COMMAND DENMARK - MIL-AIM 03 OCT 2024