

**VFR APPROACH  
FIGHTER AIRCRAFT:**

IP East (RWY 27): 5 NM E, 0.5 NM South of Centerline  
 IP West (RWY 09): 4NM W, 1.0 NM South of Centerline

For RWY 27: Right hand pattern  
 For RWY 09: Left hand pattern

VFR approach altitude:  
 1500 FT indicated (QNH)

VFR approach speed: 320 - 340 KIAS.

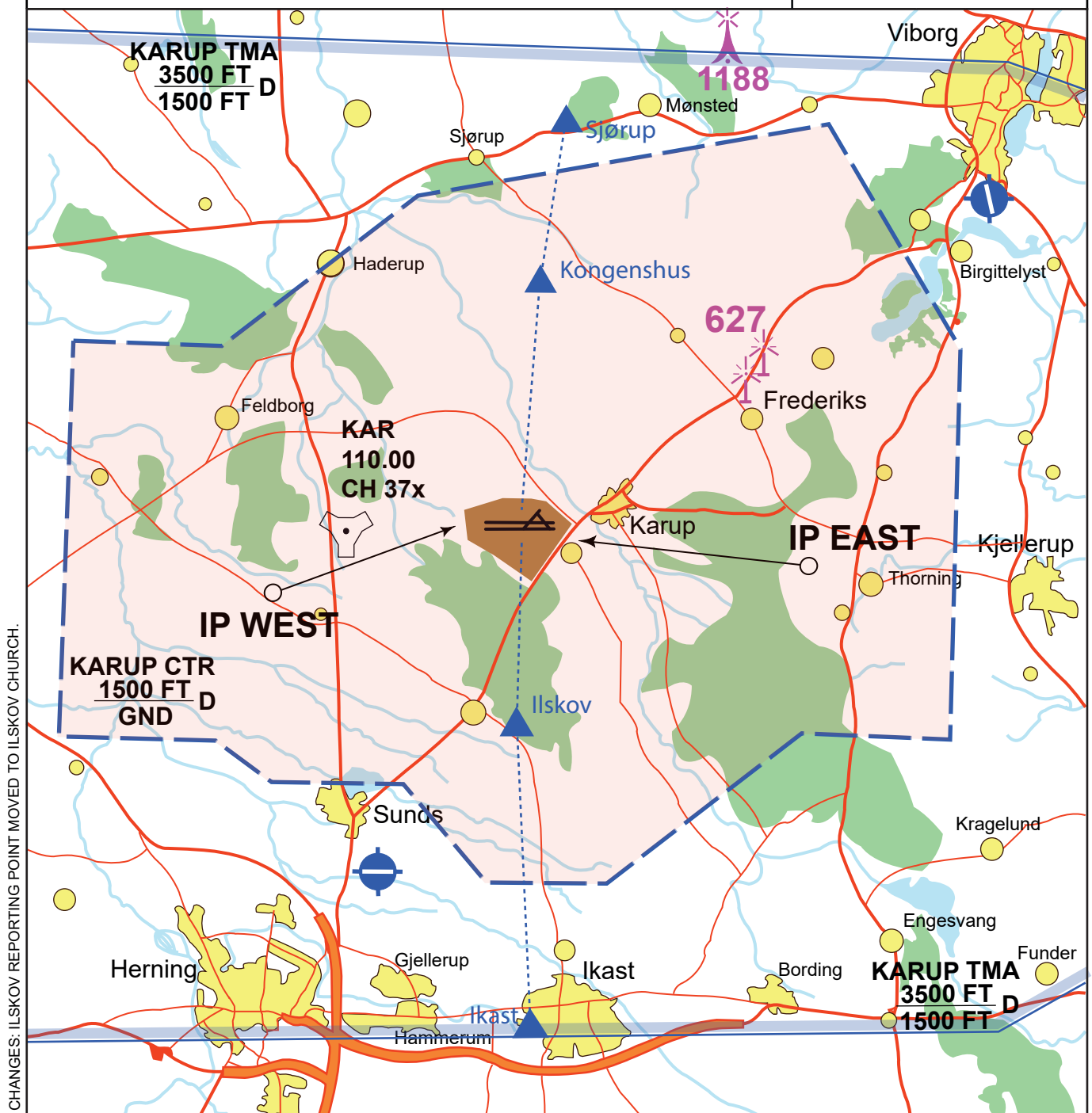
**VFR APPROACH  
LIGHT AIRCRAFT AND HELICOPTERS:**

ATC clearance for VFR traffic wil normally be issued via the routes indicated.

Arriving VFR traffic may be requested to hold at one of the holding patterns indicated.

Altitude as instructed by ATC.

▲ Reporting point for arriving VFR traffic.  
 ..... VFR route.



CHANGES: ILSKOV REPORTING POINT MOVED TO ILSKOV CHURCH.