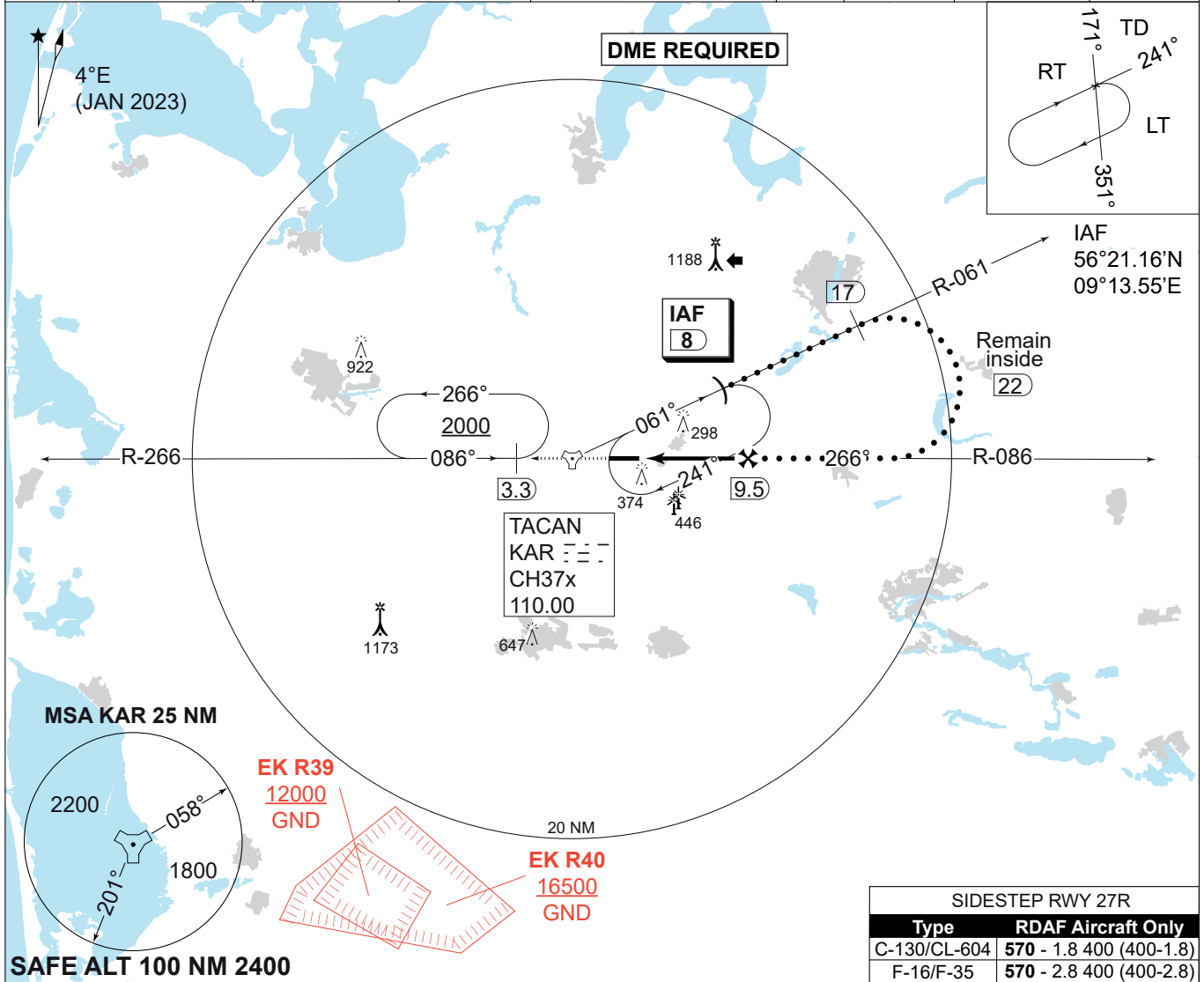


MIPS
INSTRUMENT APPROACH CHART

HPMA TACAN RWY 27L
KARUP AIR BASE (EKKA)

AD ELEV 171

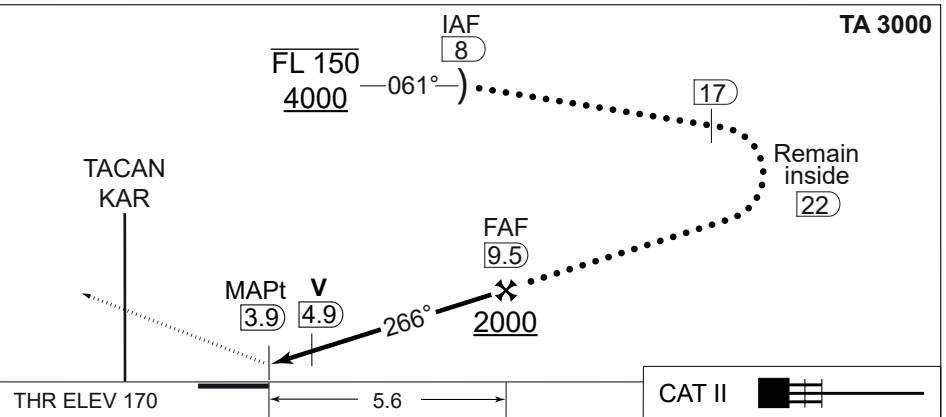
COPENHAGEN CONTROL 242.650 124.555		KARUP ATIS 120.580		KARUP APPROACH 269.275 120.430		KARUP TOWER 353.575 119.580	
TACAN KAR 110.00/CH 37x	APP COURSE 266°	FAF ALT 2000 FT	DESCENT GR. 5.24% (318 FT/NM)	MDA 550	THR ELEV 170	ALS LENGTH 900 M	LDA 9607 FT



CDFA: 3.0° / 5.24%

DME KAR	5	6	7	8	9
DIST THR	1.1	2.1	3.1	4.1	5.1
ALT	580	900	1220	1540	1850

MISSED APPROACH
Climb on R-086 to KAR.
After KAR continue on R-266.
Hold at 3.3 DME at 2000 ft.



CHANGES: PROCEDURE CHANGED FROM TERPS TO HPMA CRITERIA

CATEGORY	HPMA
S-TACAN 27L	550 - 1000 379 (400-1.0/1.7)
CIRCLING	750 - 3.2 579 (600-3.2)

HPMA TACAN RWY 27L 56°17.85'N
009°07.48'E **KARUP AIR BASE (EKKA)**

AIR COMMAND DENMARK - MIL-AIM 03 OCT 2024