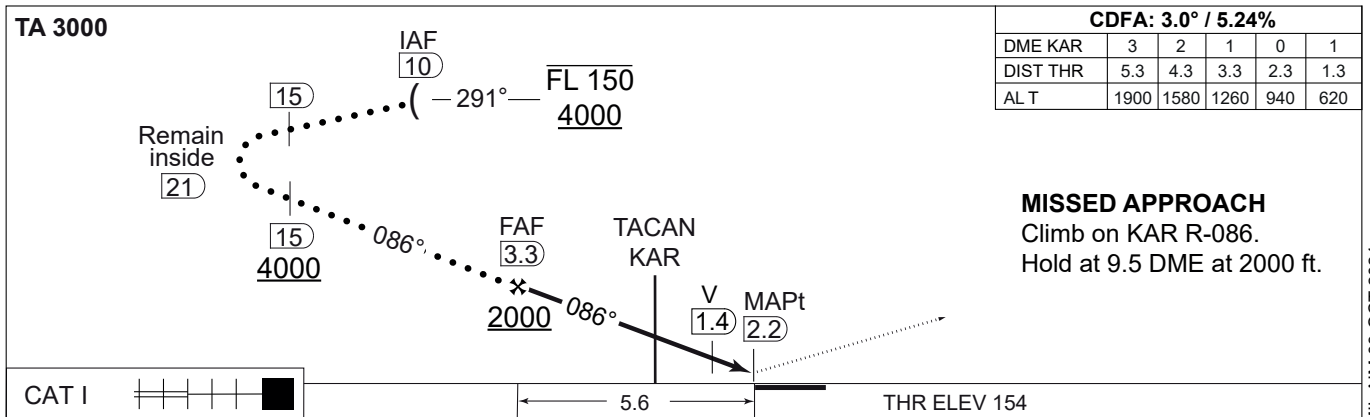
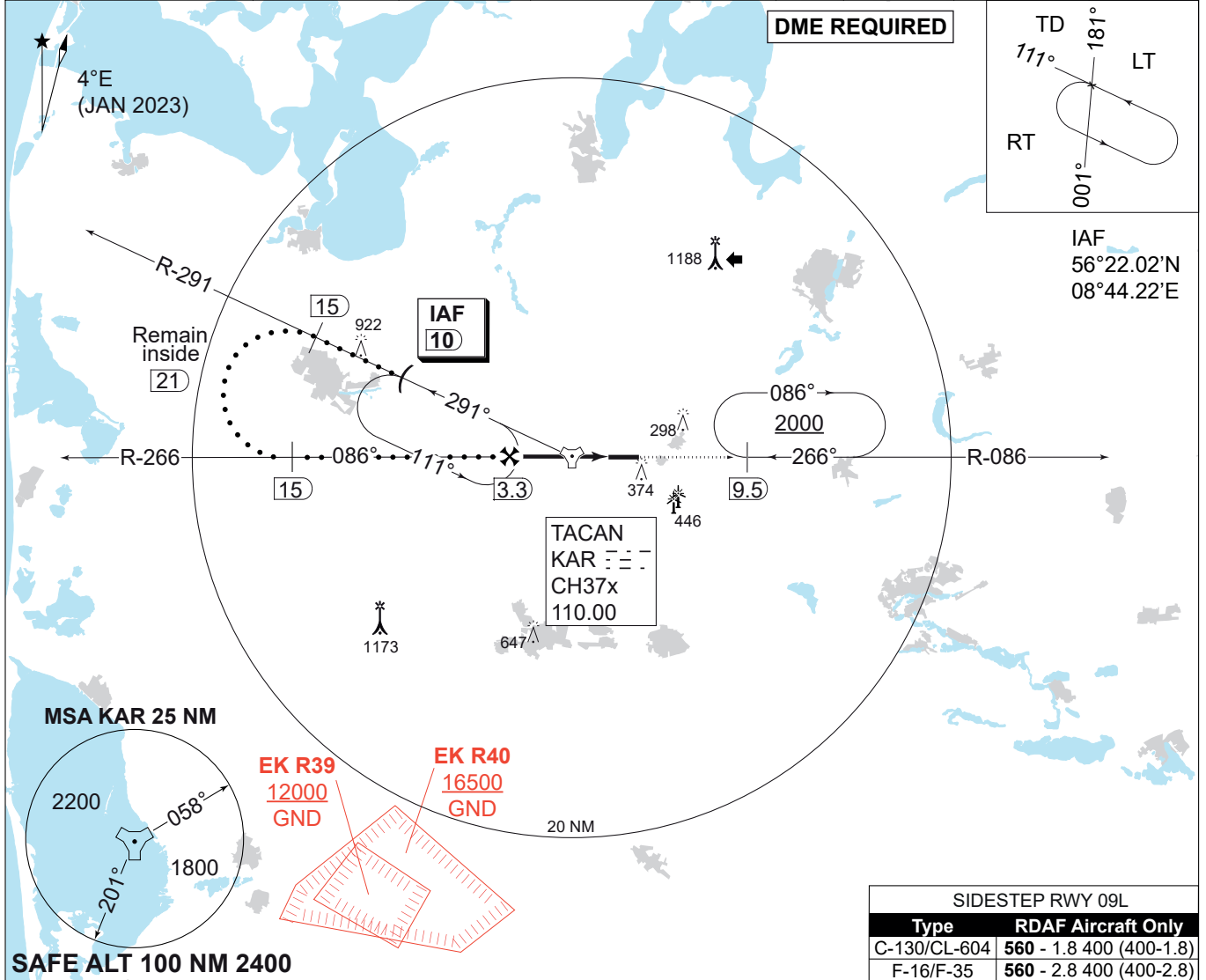


MIPS INSTRUMENT APPROACH CHART

AD ELEV 171

**HPMA TACAN RWY 09R
KARUP AIR BASE (EKKA)**

COPENHAGEN CONTROL 242.650 124.555		KARUP ATIS 120.580		KARUP APPROACH 269.275 120.430		KARUP TOWER 353.575 119.580	
TACAN KAR 110.00/CH 37x	APP COURSE 086°	FAF ALT 2000 FT	DESCENT GR. 5.24% (318 FT/NM)	MDA 490	THR ELEV 154	ALS LENGTH 900 M	LDA 9607 FT



CATEGORY	HPMA
S-TACAN 09R	490 - 800 336 (400-0.8/1.5)
CIRCLING	750 - 3.2 579 (600-3.2)

HPMA TACAN RWY 09R 56°17.85'N 009°07.48'E **KARUP AIR BASE (EKKA)**

CHANGES: PROCEDURE CHANGED FROM TERPS TO HPMA CRITERIA

AIR COMMAND DENMARK - MIL AIM 03 OCT 2024